

**JPX Data Cloud**  
**Data Specifications**

**2023/11**

**JPX Market Innovation & Research, Inc.**

# Open/High/Low/Close Price (Stock • CB)

1. Available data period  
 Stock (Domestic) : 1974/10/1  
 Stock (Foreign) : 1976/10/1  
 Convertible Bonds : 1974/10/1-2023/07/14  
 \*JASDAQ : 2013/7/16 (Recorded in TSE File), JASDAQ Data is not recorded before 2013/7/16.

2. How to get  
 Download CSV file

3. Data Specifications  
 \*Prices are not adjusted by stock split etc.  
 \*Transactions during trading sessions are covered.  
 \*Please refer to Appendix 5 for remarks for the historical data.

No.	Item	Header Name	Description (After 2021/8/2)		Description (From 2011/1/4 through 2021/7/30)	Description (Before 2010/12/30)	
			Sort Order				
1	Date	Date	2	Ascending Order	YYYYMMDD: blank digit is filled with 0.	YYYYMMDD: blank digit is filled with 0.	
2	Local Code	Issue code	1	Ascending Order	This is the code prescribed by the Security Code Council. CB is recorded the 9 digits code as below. 1st digit *** 9 2~3rd digit *** 00 4~5th digit *** Series No. Code 6~9 digit *** 4-digit stock issue code	This is the code prescribed by the Security Code Council. CB is recorded the 9 digits code as below. 1st digit *** 9 2~3rd digit *** 00 4~5th digit *** Series No. Code 6~9 digit *** 4-digit stock issue code	
3	ISIN Code	ISIN code			This is the code prescribed by the Security Code Council.	Space	
4	Exchange Code	Exchange code			01:TSE	1:TSE	
5	Issue Classification	Issue classification			2022/08/02-2022/04/01 10101:First section (Domestic stock) 20101:First section (Foreign stock) 10102:Second section (Domestic stock) 20102:Second section (Foreign stock) 10104:Mothers (Domestic stock) 20104:Mothers (Foreign stock) 10105:TOKYO PRO Market (Domestic stock) 20105:TOKYO PRO Market (Foreign stock) 10106:JASDAQ Standard (Domestic stock) 20106:JASDAQ Standard (Foreign stock) 10107:JASDAQ Growth (Domestic stock) 20107:JASDAQ Growth (Foreign stock) 10109:Others (Domestic) including - Beneficiary certificate of investment trust - Real estate investment trusts certificate - Preferred equity investment security 20109:Others (Foreign) including - Beneficiary certificate of investment trust - Real estate investment trusts certificate 19999:CB	0111:First section (Domestic stock) 0112:Second section (Domestic stock) 0113:First section (Foreign stock) 0114:Mothers (Domestic stock) 0115:Domestic beneficiary certificate of investment trust 0116:Foreign beneficiary certificate of investment trust 0117:Preferred stock 0118:Mothers (Foreign stock) 0119:Real estate investment trusts certificate 0121:Second section (Foreign stock) 0122:TOKYO PRO Market (Domestic stock)※1 0123:TOKYO PRO Market (Foreign stock)※1 0124:JASDAQ Standard (Domestic stock)※2 0125:JASDAQ Standard (Foreign stock)※2 0126:JASDAQ Growth (Domestic stock)※2 0127:JASDAQ Growth (Foreign stock)※2 0211:CB	1st Section/Domestic Equity : 001 2nd Section/Domestic Equity : 002 Mothers/Domestic Equity : 004 Domestic Investment trust etc (CB included) : 005 Foreign Equity : 003 1st Section/Foreign Equity : 101 2nd Section/Foreign Equity : 102 Mothers/Foreign Equity : 104 Foreign Investment trust etc : 105 Space : Other than the above
6	Industry Code	Industry code			Indicates the industry code.	Space	
7	Securities Under Supervision and To Be Delisted Flag	Securities under supervision and to be delisted flag			1: Securities to be delisted 2: Securities under supervision Space: Other than the above	Space	
8	Ex-right Flag	Ex-rights flag			Not available	Space	
9	Open Price	Open			Open Price (Unit : Yen)	Open Price (Unit : Yen)	
10	High Price	High			High Price (Unit : Yen)	High Price (Unit : Yen)	
11	Low Price	Low			Low Price (Unit : Yen)	Low Price (Unit : Yen)	
12	Close Price	Close			Close Price (Unit : Yen)	Close Price (Unit : Yen)	
13	Special Quotes Identifier	Final quote identifier			1:asked quote 2:bid quote Space:no special quote	1:asked quote 2:bid quote 0:Other than that above (Before 2004/12/30) Space:Other than that above (After 2005/1/4)	
14	Final Quote Flag	Final quote flag			Not available	3:Special quote 4:Continuous execution quote Space:Other than that above	
15	Final Quote	Final quote			(Unit : Yen)	Final quote : Final quote flag is 3 or 4. Space : Final quote flag is space. (Unit : Yen)	
16	Trading Volume	Trading volume			Reflected the transaction for error correction, etc. (Unit : Share in stock, Yen in CB)	Not reflected the transaction for error correction, etc. (Unit : Share in stock, Yen in CB) Reflected the transaction for error correction, etc. (Unit : Share in stock, Yen in CB) Not available before 2014/11/1	
17	Turnover	Turnover value			Reflected the transaction for error correction, etc. (Unit : Share in stock, Yen in CB)	Not reflected the transaction for error correction, etc. (Unit : Yen) Reflected the transaction for error correction, etc. (Unit : Yen) Not available before 2014/11/1	
18	VWAP	All-day VWAP			Reflected the transaction for error correction, etc. (Unit : Share in stock, Yen in CB)	Not reflected the transaction for error correction, etc. (Unit : Yen) Reflected the transaction for error correction, etc. (Unit : Yen) This available from 2004/11/1	

※1 Before 2013/7/12, the issue of TOKYO PRO Market is recorded 0114:Mothers (Domestic stock)  
 ※2 Form 2013/7/16

# Tick Data (Stock • CB)

## 1. Available data period

Stock (Domestic): 1982/2/1

Stock (Foreign): 2011/1/4

Convertible Bonds: 1982/2/1-2023/07/14

\*JASDAQ: 2013/7/16-(Recorded in TSE File), JASDAQ Data is not recorded before 2013/7/16.

Following domestic stock's data is not recorded on each date.

Date	Issue Code
1982/11/11	40050
1983/7/18	64710
1983/7/18	64720
1987/5/28, 29	67030

## 2. How to get

Download CSV file

\*In the case that the data volume exceeds fixed size (3.8GB), the file will be compressed by zip64 or 7z format.

Note: 7z format will be also used for file compression of "TSE Stock Tick Prices" since 2021/10, regardless of the file size.

If [ \_64 ] is added to the end of the name of the file, the file is compressed by zip64 format. If the file extension is [ .7z ], the file is compressed by 7z format.

Please use a decompression software corresponding to each format.

## 3. Data Specifications

\*Prices are not adjusted by stock split etc.

\*Transactions during trading sessions are covered.

\*Please refer to Appendix 5 for remarks for the historical data.

No.	Item	Header Name	Description (After 2021/8/2)		Description (From 2011/1/4 through 2021/7/30)	Description (Before 2010/12/30)	
			Sort Order				
1	Date	Date	2	Ascending Order	YYYYMMDD: blank digit is filled with 0.	YYYYMMDD: blank digit is filled with 0.	
2	Local Code	Issue code	1	Ascending Order	This is the code prescribed by the Security Code Council. CB is recorded the 9 digits code as below. 1st digit ... 9 2~3rd digit ... 00 4~5th digit ... Series No. Code 6~9 digit ... 4-digit stock issue code	This is the code prescribed by the Security Code Council. CB is recorded the 9 digits code as below. 1st digit ... 9 2~3rd digit ... 00 4~5th digit ... Series No. Code 6~9 digit ... 4-digit stock issue code	
3	ISIN Code	ISIN code			This is the code prescribed by the Security Code Council.	Space	
4	Exchange Code	Exchange code			01:TSE	1:TSE	
5	Issue Classification	Issue classification			2022/08/02-2022/04/01 10101:First section (Domestic stock) 20101:First section (Foreign stock) 10102:Second section (Domestic stock) 20102:Second section (Foreign stock) 10104:Mothers (Domestic stock) 20104:Mothers (Foreign stock) 10105:TOKYO PRO Market (Domestic stock) 20105:TOKYO PRO Market (Foreign stock) 10106:JASDAQ Standard (Domestic stock) 20106:JASDAQ Standard (Foreign stock) 10107:JASDAQ Growth (Domestic stock) 20107:JASDAQ Growth (Foreign stock) 10109:Others(Domestic),including - Beneficiary certificate of investment trust - Real estate investment trusts certificate - Preferred equity investment security 20109:Others(Foreign),including - Beneficiary certificate of investment trust - Real estate investment trusts certificate 19999:CB  2022/04/04- 10111:Prime (Domestic stock) 20111:Prime (Foreign stock) 10112:Standard (Domestic stock) 20112:Standard (Foreign stock) 10113:Growth (Domestic stock) 20113:Growth (Foreign stock) 10105:TOKYO PRO Market (Domestic stock) 20105:TOKYO PRO Market (Foreign stock) 10109:Others(Domestic),including - Beneficiary certificate of investment trust - Real estate investment trusts certificate - Preferred equity investment security 20109:Others(Foreign),including - Beneficiary certificate of investment trust - Real estate investment trusts certificate 19999:CB	0111:First section (Domestic stock) 0112:Second section (Domestic stock) 0113:First section (Foreign stock) 0114:Mothers (Domestic stock) 0115:Domestic beneficiary certificate of investment trust 0116:Foreign beneficiary certificate of investment trust 0117:Preferred stock 0118:Mothers (Foreign stock) 0119:Real estate investment trusts certificate 0121:Second section (Foreign stock) 0122:TOKYO PRO Market (Domestic stock)※1 0123:TOKYO PRO Market (Foreign stock)※1 0124:JASDAQ Standard (Domestic stock)※2 0125:JASDAQ Standard (Foreign stock)※2 0126:JASDAQ Growth (Domestic stock)※2 0127:JASDAQ Growth (Foreign stock)※2 0211:CB	Space
6	Industry Code	Industry code			Indicates the industry code.	Indicates the industry code.	
7	Securities Under Supervision and To Be Delisted Flag	Securities under supervision and to be delisted flag			1: Securities to be delisted 2: Securities under supervision Space: Other than the above	1: Securities to be delisted 2: Securities under supervision Space: Other than the above	
8	Time	Time			hhmmssttttt  hhmmssttttt On/before 2017/9/1 hhmmsstttt00(100 Microseconds)  On/before 2015/9/18 hhmmssttttt hhmmssttttt : This indicates the time when the price is recorded. (24 hour. Blanks are filled with "0.") ※ssmm is fixed 00000.	hhmmssttttt : This indicates the time when the price is recorded. (24 hour. Blanks are filled with "0.") ※ssmm is fixed 00000.	
9	Session distinction	Session distinction			01: Morning 02: Afternoon	01: Morning 02: Afternoon	
10	Price	Price			(Unit : Yen)	(Unit : Yen)	
11	Trading Volume	Trading volume			(Unit : Share)	(Unit : Share) ※3	
12	Short Selling Regulation Flag	Short selling regulation flag			NA 0: Short selling regulation does not apply. 1: Short selling regulation is effective.	Space	
13	Closing Price Input Flag	Closing price input flag			NA 1: when the trade isn't established at closing (ZARABA close) 2: when the trade is established at closing (Close at the closing price) Space: Other than the above	Space	

14	State Flag	State flag			NA	<p>Indicates the state of the trade  A0: Trading Halt(Accepting Order Input)  A1: Release of Trading Halt  B0: Itayose  B1: Release of Itayose  C0: Trading Suspension  C1: Release of Trading Suspension  D0: Trading Halt(Not Accepting Order Input)  Space: Other than the above</p> <p>B0: Indicate Itayose for Trading Suspension after removal of Special Quote  B1: Indicate exit from Itayose when Trading Suspension is removed after removal of Special Quote</p>	Space
15	Transaction ID	Transaction ID			<p>"Sequence" means the order of the transaction in the same time. So, transaction ID is not serial number.</p>	<p>yyyymmddhhmsstttt+Sequence (5digit)  On/before 2017/9/1  yyyymmddhhmsstttt00+Sequence (5digit)  "Sequence" means the order of the transaction in the same time. So, transaction ID is not serial number.</p>	<p>yyyymmddhhmsstttt000+Sequence (3digit)  "Sequence" means the order of the transaction in the same time. So, transaction ID is not serial number.</p>

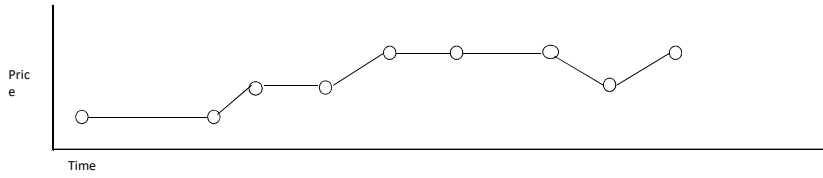
※1 Before 2013/7/12, the issue of TOKYO PRO Market is recorded 0114:Mothers(Domestic stock)

※2 From 2013/7/16

※3 From 2006/2/1

The tick data specifications are as follows.

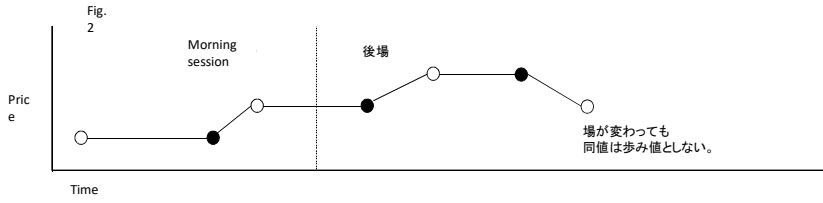
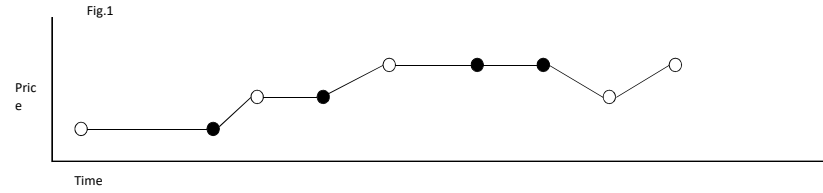
Data contains all the transaction and associated trading volume.



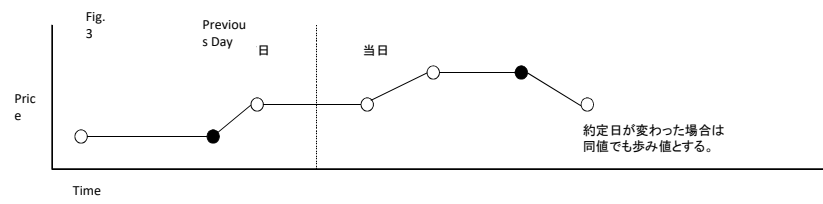
**Be careful!**

The tick data specifications before 2006/01/30 are as follows.

Data only records the history of price change. (Only the price labeled with white circle is recorded in Fig 1)  
 If the close price of the morning session and the open price of the afternoon session is the same, the latter price is not recorded. (Fig. 2) If the previous day's closing price and the open price is the same the latter price is also recorded. (Fig 3)



When transactions are occurred at the same price straddling the two sessions, the latter price is not recorded.



When "Date" is different, the opening price is recorded as a tick even it is the same price as the previous day's closing price.

# Open/High/Low/Close Price (Index)

## 1. Available data period

Since the available data period varies by each index, refer to Appendix 1.

## 2. How to get

Download CSV file

## 3. Data Specifications

\*Please refer to Appendix 5 for remarks for the historical data.

No.	Item	Header Name	Sample	Description
1	Date	Date	20130428	yyymmdd
2	Index Code	Index type	0000	Index Code
3	Open price	Open	1667.52	Open price In the period recorded only closing price, space is recorded.
4	High Price	High	1667.52	High Price In the period recorded only closing price, space is recorded.
5	Low Price	Low	1644.22	Low Price In the period recorded only closing price, space is recorded.
6	Close Price	Close	1644.22	Close Price

# Tick Data (Index)

## 1. Available data period

Since the available data period varies by each index, refer to Appendix 1.

## 2. How to get

Download CSV file

## 3. Data Specifications

\*Please refer to Appendix 5 for remarks for the historical data.

No.	Item	Header Name	Sample	Description
1	Date	Date	20131202	yyyymmdd
2	Index Code	Index type	0000	Index Code
3	Time	Time	090022	hhmmss
4	Session distinction	Session distinction	01	01 : Morning 02 : Afternoon
5	Index value	Current value	1260.95	Index value

# O/H/L/C Price Data (Derivatives)

## 1. Availability

Please refer to fee schedule document as availability is vary depending upon products

## 2. How to get

Download CSV file

## 3. Data Specifications

### (1) Futures

No.	Header (All lowercase on and after 2022/7)	Item	Sort Order	Description	Sample
1	Trade_Date	Trade Date	1 Ascending Order	"One trading day" is from the night session of the business day to the day session of the following business day. Calendar date for the above "the day session of the following business day" is set. (YYYYMMDD)	20091201
2	Index_Type	Index Segment	2 Ascending Order	Index segment is indicated. Please refer Appendix 3 for further information.	18
3	Security_Code	Local Securities Code	3 Ascending Order	Derivatives: 9-digit code Please refer to Appendix 3 for further information	164120018
4	Open_Price_for_Whole_Trade_Day	Opening Price for Whole Trading Day		Opening price of the product/contract for the whole trading day (Unit: JPY or point)	9330
5	High_Price_for_Whole_Trade_Day	High Price for Whole Trading Day		High price of the product/contract for the whole trading day (Unit: JPY or point)	9570
6	Low_Price_for_Whole_Trade_Day	Low Price for Whole Trading Day		Low price of the product/contract for the whole trading day (Unit: JPY or point)	9220
7	Close_Price_for_Whole_Trade_Day	Closing Price for Whole Trading Day		Closing Price of the product/contract for the whole trading day (Unit: JPY or point)	9550
8	settlement_price	Settlement Price		Settlement Price of the product/contract (Unit: JPY or point) *on and after 2022/7 (no data before 2022/7)	9550
9	Open_Price_for_Night_Session	Opening Price for Night Session		Opening price of the product/contract for the night session (Unit: JPY or point)	9330
10	High_Price_for_Night_Session	High Price for Night Session		High price of the product/contract for the night session (Unit: JPY or point)	9340
11	Low_Price_for_Night_Session	Low Price for Night Session		Low price of the product/contract for the night session (Unit: JPY or point)	9250
12	Close_Price_for_Night_Session	Closing Price for Night Session		Closing Price of the product/contract for the night session (Unit: JPY or point)	9260
13	Open_Price_for_Morning_Session	Opening Price for Morning Session (if morning session trading is applied)		Opening price of the product/contract for the morning session (Unit: JPY or point)	9220
14	High_Price_for_Morning_Session	High Price for Morning Session (if morning session trading is applied)		High price of the product/contract for the morning session (Unit: JPY or point)	9320
15	Low_Price_for_Morning_Session	Low Price for Morning Session (if morning session trading is applied)		Low price of the product/contract for the morning session (Unit: JPY or point)	9220
16	Close_Price_for_Morning_Session	Closing Price for Morning Session (if morning session trading is applied)		Closing Price of the product/contract for the morning session (Unit: JPY or point)	9270
17	Open_Price_for_Afternoon_Session	Opening Price for Day Session (or Afternoon Session)		Opening price of the product/contract for the afternoon session (Unit: JPY or point)	9430
18	High_Price_for_Afternoon_Session	High Price for Day Session (or Afternoon Session)		High price of the product/contract for the afternoon session (Unit: JPY or point)	9570
19	Low_Price_for_Afternoon_Session	Low Price for Day Session (or Afternoon Session)		Low price of the product/contract for the afternoon session (Unit: JPY or point)	9430
20	Close_Price_for_Afternoon_Session	Closing Price for Day Session (or Afternoon Session)		Closing Price of the product/contract for the afternoon session (Unit: JPY or point)	9550
21	Trade_Volume	Trading Volume		Trading volume of the product/contract for the whole trading day including non-auction.(Unit: number of contracts)	161490
22	Trade_Volume_without_sco_category	Trade Volume without sco category		Trading volume without strategy trading of the product/contract for the whole trading day including non-auction(Unit: number of contracts). *On and after September 2022(no data before September 2022)	150000
23	Open_Interest	Open Interest		Open interest of the product/contract for the whole trading day (Unit: number of contracts)	338008
25	Trade_Value	Trading Value		Trading value of the product/contract for the whole trading day including non-auction (Unit: JPY or point)	1517107272000
24	Trade_Value_without_sco_category	Trade Value without sco category		Trading value without strategy trading of the product/contract for the whole trading day including non-auction (Unit: JPY). *On and after September 2022(no data before September 2022)	1517107270000
26	Contract_Month	Contract Month		Contract Month of the product/contract (YYYYMM)	200912

※ Please refer "4. Session Information of O/H/L/C Price Data" for availability of session data for each product. Flexible Futures is excluded.

※ Only trading volume and trading value of strategy trading have been included since September 21, 2021.

※ Figures through September 17, 2021 include strategy trading. However, except for trading volume and trading value, strategy trading is not included in the figures with regard to executed trade up to February 10, 2011 for products previously traded on OSE and with regard to that up to November 18, 2011 for products previously traded on TSE

※From September 2022, price information(open, high, low and close) of "night session"/"whole trade day", trade volume and trade value include holiday trading.



## (2)Options

No.	Header (All lowercase on and after 2022/7)	Item	Sort Order	Description	Sample
1	Trade_Date	Trade Date	1 Ascending Order	"One trading day" is from the night session of the business day to the day session of the following business day. Calendar date for the above " " the day session of the following business day " is set. (YYYYMMDD)	20091201
2	Index_Type/Underlying_Security_Code	Index Segment / Underlying Securities	2 Ascending Order	Index segment is indicated. Please refer table of "Segment for the underlying index" in Appendix 3 for further information.	18
3	Put_Call_Type	Distinction of Put or Call	3 Ascending Order	Distinction of put or call is indicated(1:Put, 2:Call)	1
4	Security_Code	Local Securities Code	4 Ascending Order	Derivatives: 9-digit code Please refer to Appendix 3 for further information.	134120018
5	Open_Price_for_Whole_Trade_Day	Opening Price for Whole Trading Day		Opening price of the product/contract for the whole trading day (Unit: JPY or point)	740
6	High_Price_for_Whole_Trade_Day	High Price for Whole Trading Day		High price of the product/contract for the whole trading day (Unit: JPY or point)	780
7	Low_Price_for_Whole_Trade_Day	Low Price for Whole Trading Day		Low price of the product/contract for the whole trading day (Unit: JPY or point)	485
8	Close_Price_for_Whole_Trade_Day	Closing Price for Whole Trading Day		Closing Price of the product/contract for the whole trading day (Unit: JPY or point)	500
9	settlement_price	Settlement Price		Settlement Price of the product/contract (Unit: JPY or point) *on and after 2022/7 (no data before 2022/7)	500
10	Open_Price_for_Night_Session	Opening Price for Night Session		Opening price of the product/contract for the night session (Unit: JPY or point)	740
11	High_Price_for_Night_Session	High Price for Night Session		High price of the product/contract for the night session (Unit: JPY or point)	740
12	Low_Price_for_Night_Session	Low Price for Night Session		Low price of the product/contract for the night session (Unit: JPY or point)	740
13	Close_Price_for_Night_Session	Closing Price for Night Session		Closing Price of the product/contract for the night session (Unit: JPY or point)	740
14	Open_Price_for_Morning_Session	Opening Price for Morning Session (if morning session trading is applied)		Opening price of the product/contract for the morning session (Unit: JPY or point)	765
15	High_Price_for_Morning_Session	High Price for Morning Session (if morning session trading is applied)		High price of the product/contract for the morning session (Unit: JPY or point)	780
16	Low_Price_for_Morning_Session	Low Price for Morning Session (if morning session trading is applied)		Low price of the product/contract for the morning session (Unit: JPY or point)	720
17	Close_Price_for_Morning_Session	Closing Price for Morning Session (if morning session trading is applied)		Closing Price of the product/contract for the morning session (Unit: JPY or point)	765
18	Open_Price_for_Afternoon_Session	Opening Price for Day Session (or Afternoon Session)		Opening price of the product/contract for the afternoon session (Unit: JPY or point)	565
19	High_Price_for_Afternoon_Session	High Price for Day Session (or Afternoon Session)		High price of the product/contract for the afternoon session (Unit: JPY or point)	570
20	Low_Price_for_Afternoon_Session	Low Price for Day Session (or Afternoon Session)		Low price of the product/contract for the afternoon session (Unit: JPY or point)	485
21	Close_Price_for_Afternoon_Session	Closing Price for Day Session (or Afternoon Session)		Closing Price of the product/contract for the afternoon session (Unit: JPY or point)	500
22	Trade_Volume	Trading Volume		Trading volume of the product/contract for the whole trading day including non-auction.(Unit: number of contracts)	55
23	Open_Interest	Open Interest		Open interest of the product/contract for the whole trading day (Unit: number of contracts) *In case of JGB futures options whose last trading day is end of a month, open interest is indicated as the number of contract that is remaining to be exercised or expired at the close of the last trading	30778
24	Trade_Value	Trading Value		Trading value of the product/contract for the whole trading day including non-auction.(Unit: JPY or point)	31680000
25	Contract_Month	Contract Month		Contract Month of the product/contract (YYYYMM) Please note that two digit contract code is used instead of "MM" for Nikkei 225 Weekly Options and Nikkei 225 mini Options. For further information, please refer to Appendix 3	200912
26	Exercise_Price	Exercise Price		Exercise Price of product/contract (Unit: JPY or point)	10000
27	Cash_Futures_Type	Distinction of Cash or Futures		Indicates whether underlying products are cash or futures (1:Cash, 2:Futures)	1

※ Please refer "4. Session Information of O/H/L/C Price Data" for availability of session data for each product. Flexible Options is excluded.

※ Figures of strategy trading have been excluded since September 21, 2021.

※ Figures through September 17, 2021 include strategy trading. However, except for trading volume and trading value, strategy trading is not included in the figures with regard to executed trade up to February 10, 2011 for products previously traded on OSE and with regard to that up to November 18, 2011 for products previously traded on TSE

※ From September 2022, price information(open, high, low and close) of "night session" / "whole trade day", trade volume and trade value include holiday trading.

4. Session Information of O/H/L/C Price Data

Products	UP to September 18, 2000	From Sept. 19, 2000 to Jan. 31, 2005	From Feb.1, 2005 to Sept.18, 2007	From Sept. 19, 2007 to June 16, 2008	From June 17, 2008 to Feb. 10, 2011	From Feb. 14, 2011 to March 20, 2014	On or after March 24, 2014
Index Futures/Options (Products previously traded on OSE)※1	Whole Trading Day*(No Night Session) (No Morning Session)*(No Afternoon Session)		Whole Trading Day*(No Night Session) Morning Session*Afternoon Session	Whole Trading Day*Night Session Morning Session*Afternoon Session		Whole Trading Day*Night Session (No Morning Session)*Day Session	
Index Futures/Options (Products previously traded on TSE)※1	Whole Trading Day*(No Night Session)*Morning Session*Afternoon Session				Whole Trading Day*Night Session*Morning Session*Afternoon Session		Whole Trading Day*Night Session (No Morning Session)*Day Session
JGB Futures/ Futures Options	Whole Trading Day*(No Night Session) Morning Session*Afternoon Session	Whole Trading Day*Night Session*Morning Session*Afternoon Session					
Individual Security Options	Whole Trading Day*(No Night Session) *Morning Session*Afternoon Session						

※1. With regard to RN Prime Index Futures, O/H/L/C prices only for whole trading day is available up to June 2011, while in and after July 2011, O/H/L/C prices for whole trading day, night and day session is available like other stock index futures products.

※1. With regard to Nikkei 225 VI Futures, O/H/L/C prices only for whole trading day and day session is available up to July 15, 2016 while on and after July 19, 2016, whole trading day, night and day session is available like other stock index futures products.

※With regard to TAIEX futures, O/H/L/C prices only for whole trading day and day session is available.

※Please refer Appendix 3 for the meaning of products previously traded on TSE/OSE .

## O/H/L/C Price Data(Commodity Derivatives)

### 1. Availability

Please refer to fee schedule document as availability is vary depending upon products

### 2. How to get

Download CSV file

### 3. Data Specifications

#### (1) Futures

No.	Header	Item	Sort Order	Description	Sample
1	trade_date	Trading date	1 Ascending Order	"One trading day" is from the night session of the business day to the day session of the following business day. Calendar date for the above "the day session of the following business day" is set. (YYYYMMDD)	20141104
2	index_type	Index Segment	2 Ascending Order	Index segment is indicated. Please refer to Appendix 3 for further information.	A1
3	security_code	Local Securities Code	3 Ascending Order	Derivatives: 9-digit code	1650800A1
4	商品等	Products (Japanese)		Products (Japanese)	
5	products	Products (English)		Products (English)	
6	open_price_for_whole_trade_day	Opening Price for Whole Trading Day		Opening price of the product/contract for the whole trading day (Unit: JPY or point)	9330
7	high_price_for_whole_trade_day	High Price for Whole Trading Day		High price of the product/contract for the whole trading day (Unit: JPY or point)	9570
8	low_price_for_whole_trade_day	Low Price for Whole Trading Day		Low price of the product/contract for the whole trading day (Unit: JPY or point)	9220
9	close_price_for_whole_trade_day	Closing Price for Whole Trading Day		Closing Price of the product/contract for the whole trading day	9550
10	settlement_price	Settlement price		Settlement price of the product/contract for the whole trading day (Unit: JPY or point)	9330
11	open_price_for_night_session	Opening Price for Night Session		Opening price of the product/contract for the night session (Unit: JPY or point)	9330
12	high_price_for_night_session	High Price for Night Session		High price of the product/contract for the night session (Unit: JPY or point)	9340
13	low_price_for_night_session	Low Price for Night Session		Low price of the product/contract for the night session (Unit: JPY or point)	9250
14	close_price_for_night_session	Closing Price for Night Session		Closing Price of the product/contract for the night session (Unit: JPY or point)	9260
15	open_price_for_morning_session	Opening Price for Morning Session (if morning session trading is applied)		Opening price of the product/contract for the morning session	9220
16	high_price_for_morning_session	High Price for Morning Session (if morning session trading is applied)		High price of the product/contract for the morning session (Unit: JPY or point)	9320
17	low_price_for_morning_session	Low Price for Morning Session (if morning session trading is applied)		Low price of the product/contract for the morning session (Unit: JPY or point)	9220
18	close_price_for_morning_session	Closing Price for Morning Session (if morning session trading is applied)		Closing Price of the product/contract for the morning session	9270
19	open_price_for_afternoon_session	Opening Price for Day Session (or Afternoon Session)		Opening price of the product/contract for the afternoon session (Unit: JPY or point)	9430
20	high_price_for_afternoon_session	High Price for Day Session (or Afternoon Session)		High price of the product/contract for the afternoon session (Unit: JPY or point)	9570
21	low_price_for_afternoon_session	Low Price for Day Session (or Afternoon Session)		Low price of the product/contract for the afternoon session (Unit: JPY or point)	9430
22	close_price_for_afternoon_session	Closing Price for Day Session (or Afternoon Session)		Closing Price of the product/contract for the afternoon session (Unit: JPY or point)	9550
23	trade_volume	Trading Volume		Trading volume of the product/contract for the whole trading day including non-auction.(Unit: number of contracts)	161490
24	Trade_Volume_without_sco_category	Trade Volume without sco category		Trading volume without strategy trading of the product/contract for the whole trading day including non-auction.(Unit: number of contracts). *On and after September 2022(no data before September 2022)	150000
25	open_interest	Open Interest		Open interest of the product/contract for the whole trading day (Unit: number of contracts)	338008
26	trade_value	Trading Value		Trading value of the product/contract for the whole trading day including non-auction (Unit: JPY or point)	151710727000
27	Trade_Value_without_sco_category	Trade Value without sco category		Trading value without strategy trading of the product/contract for the whole trading day including non-auction.(Unit: number of contracts). *On and after September 2022(no data before September 2022)	1517107270000
28	contract_month	Contract Month		Contract Month of the product/contract (YYYYMM) *Space for Rolling-Spot Futures.	200912

※Strategy trading and transactions for error correcting are included in "trade\_volume"(No.23) and "trade\_value"(No.25).

※ Final settlement price of Cash-settled Futures Transaction, except for that of Rolling Spot Futures, is additionally provided.

※ OHLC Price data has not reflected the Price of Legs which is element of the Strategy Trades from September 21, 2021.

※Price of transactions for error correcting is not reflected at OHLC Price data.

※From September 2022, price information(open, high, low and close) of "night session"/"whole trade day", trade volume and trade value include holiday trading.

#### (2) Options

No.	ヘッダー名	項目	ソート順	内容(全期間共通)	サンプル
1	Trade_Date	Trading date	1 Ascending Order	"One trading day" is from the night session of the business day to the day session of the following business day. Calendar date for the above "the day session of the following business day" is set. (YYYYMMDD)	20141104
2	Index_Type/Underlying_Security_Code	Index Segment	2 Ascending Order	Index segment is indicated. Please refer to Appendix 3 for further information.	A1
3	Put_Call_Type	Distinction of Put or Call	3 Ascending Order	Distinction of put or call is indicated(1:Put, 2:Call)	1
4	Security_Code	Local Securities Code	3 Ascending Order	Derivatives: 9-digit code Please refer to Appendix 3 for further information.	1650800A1
5	商品等	Products (Japanese)		Products (Japanese)	
6	products	Products (English)		Products (English)	
7	Open_Price_for_Whole_Trade_Day	Opening Price for Whole Trading Day		Opening price of the product/contract for the whole trading day (Unit: JPY or point)	9330
8	High_Price_for_Whole_Trade_Day	High Price for Whole Trading Day		High price of the product/contract for the whole trading day (Unit: JPY or point)	9570
9	Low_Price_for_Whole_Trade_Day	Low Price for Whole Trading Day		Low price of the product/contract for the whole trading day (Unit: JPY or point)	9220
10	Close_Price_for_Whole_Trade_Day	Closing Price for Whole Trading Day		Closing Price of the product/contract for the whole trading day	9550
11	settlement_price	Settlement price		Settlement price of the product/contract for the whole trading day (Unit: JPY or point)	9330
12	Open_Price_for_Night_Session	Opening Price for Night Session		Opening price of the product/contract for the night session (Unit: JPY or point)	9330
13	High_Price_for_Night_Session	High Price for Night Session		High price of the product/contract for the night session (Unit: JPY or point)	9340
14	Low_Price_for_Night_Session	Low Price for Night Session		Low price of the product/contract for the night session (Unit: JPY or point)	9250
15	Close_Price_for_Night_Session	Closing Price for Night Session		Closing Price of the product/contract for the night session (Unit: JPY or point)	9260
16	Open_Price_for_Morning_Session	Opening Price for Morning Session (if morning session trading is applied)		Opening price of the product/contract for the morning session	9220
17	High_Price_for_Morning_Session	High Price for Morning Session (if morning session trading is applied)		High price of the product/contract for the morning session (Unit: JPY or point)	9320
18	Low_Price_for_Morning_Session	Low Price for Morning Session (if morning session trading is applied)		Low price of the product/contract for the morning session (Unit: JPY or point)	9220
19	Close_Price_for_Morning_Session	Closing Price for Morning Session (if morning session trading is applied)		Closing Price of the product/contract for the morning session	9270
20	Open_Price_for_Afternoon_Session	Opening Price for Day Session (or Afternoon Session)		Opening price of the product/contract for the afternoon session (Unit: JPY or point)	9430
21	High_Price_for_Afternoon_Session	High Price for Day Session (or Afternoon Session)		High price of the product/contract for the afternoon session (Unit: JPY or point)	9570
22	Low_Price_for_Afternoon_Session	Low Price for Day Session (or Afternoon Session)		Low price of the product/contract for the afternoon session (Unit: JPY or point)	9430
23	Close_Price_for_Afternoon_Session	Closing Price for Day Session (or Afternoon Session)		Closing Price of the product/contract for the afternoon session (Unit: JPY or point)	9550
24	Trade_Volume	Trading Volume		Trading volume of the product/contract for the whole trading day including non-auction.(Unit: number of contracts)	161490
25	Open_Interest	Open Interest		Open interest of the product/contract for the whole trading day (Unit: number of contracts)	338008
26	Trade_Value	Trading Value		Trading value of the product/contract for the whole trading day including non-auction (Unit: JPY or point)	151710727000
27	Contract_Month	Contract Month		Contract Month of the product/contract (YYYYMM)	200912
28	Exercise_Price	Exercise Price		Exercise Price of product/contract (Unit: JPY or point)	10000

※Strategy trading and transactions for error correcting are included in "trade\_volume"(No.23) and "trade\_value"(No.25).

※ Final settlement price is additionally provided.

※ OHLC Price data has not reflected the Price of Legs which is element of the Strategy Trades from September 21, 2021.

※Price of transactions for error correcting is not reflected at OHLC Price data.

※From September 2022, price information(open, high, low and close) of "night session"/"whole trade day", trade volume and trade value include holiday trading.

## O/H/L/C Price Data(Commodity Derivatives(Posted on previous TOCOM website))

### 1. Availability

From 1992 to 2021 (For 2021, it will be until September 17th.)

\*Due to the difference of listing date, the suspension of transactions and delisting, there might be a period when the products data were not partially included.

### 2. How to get

Download CSV file

### 3. Data Specifications

Item	Item Name	Format	Description
<b>A</b>	Trade Date	Char	Trade Date (YYYYMMDD)
<b>B</b>	Type	Char	(until May 1st, 2009) "1":Futures Transaction , "2":Call Options Transaction , "3":Put Options Transaction (after May 7th, 2009) "11":Physically Delivered Futures Transaction "12":Cash-settled Futures Transaction "21":Call Options Transaction "22":Put Options Transaction
<b>C</b>	Product	Varchar	Product Code 11:GOLD 12:SILVER 13:PLATINUM 14:PALLADIUM 16:GOLD MINI 17:PLATINUM MINI 18:GOLD ROLLING SPOT 19:PLATINUM ROLLING SPOT 21:Aluminum 31:GASOLINE 32:KEROSENE 33:CRUDE OIL 34:GAS OIL 37:CHUKYO GASOLINE 38:CHUKYO KEROSENE 41:Cash-settled BARGE GASOLINE 42:Platts Cash-settled BARGE KEROSENE 43:Platts Cash-settled BARGE GAS OIL 44:Cash-settled LORRY GASOLINE 45:Platts Cash-settled LORRY KEROSENE 46:Platts Cash-settled LORRY GAS OIL 61:West Area Baseload Electricity 62:West Area Peakload Electricity 62:Cotton Yarn(Before September 1, 2000) 63:East Area Baseload Electricity 64:East Area Peakload Electricity 65:Wool Yarn 81:RSS3 RUBBER 82:TSR20 RUBBER 100:Nikkei-TOCOM Commodity Index ROLLING SPOT 102:Nikkei-TOCOM Commodity Index 201:Corn 202:Soybeans 204:Azuki Beans 211:Raw Sugar
<b>D</b>	Contract Month	Char	Contract Month of the product/contract (YYYYMM)
<b>E</b>	Exercise Price	Varchar	Exercise Price of product/contract (Only for Options)
<b>F</b>	Open Price	Varchar	Opening price for Whole Trading Day
<b>G</b>	High Price	Varchar	High price for Whole Trading Day
<b>H</b>	Low Price	Varchar	Low price for Whole Trading Day
<b>I</b>	Close Price	Varchar	Closing Price for Whole Trading Day
<b>J</b>	Settlement price	Varchar	Settlement price of the product/contract
<b>K</b>	Volume	Varchar	Trading volume of the product/contract
<b>L</b>	Open Interest	Varchar	Open interest of the product/contract

\*The data of the products(Precious Metals, Rubber, Agricultural) transferred to Osaka Exchange is recorded until July 24, 2020.

\* For items F(Open Price) to I(Close Price), In the case of no transaction, "0" is displayed in related items until May 1, 2009, and "blank" on and after May 7, 2009.

# One-Minute O/H/L/C Price(Derivatives)

## 1. Availability

Please refer to fee schedule document as availability is vary depending upon products

## 2. How to get

Download CSV file

## 3. Data Specifications

### (1) Futures

No.	Header (All lowercase on and after 2022/7)	Item	Sort Order	Description	Sample
1	Trade_Date	Trading date	1 Ascending Order	"One trading day" is from the night session of the business day to the day session of the following business day. Calendar date for the above " the day session of the following business day " is set. (YYYYMMDD)	20220926
2	Execution_Date	Execution date		Calendar date when transaction is actually conducted(YYYYMMDD) *On and after September 2022(no data before September 2022)	20220922
3	Index_Type	Index Segment	2 Ascending Order	Indes segment is indicated. Please refer to Appendix 3 for further information.	19
4	Security_Code	Local Securities Code	3 Ascending Order	Derivatives: 9-digit code Please refer to Appendix 3 for further information.	166030019
5	Session_ID	Session ID		Trading session segment: Morning and Afternoon sessions=999, Night sessions=003	003
6	Interval_Time	Interval Time		Per-minute time (HHMM) Example: 9:20 "0920", 13:30 "1330" *While 24:00 mid-night is indicates as "0000" under data specification, only "0" could be shown when opening a file in Excel or other application.	1630
7	Open_Price	Open Price		Open price in the set time period (Unit: JPY or point)	10245
8	High_Price	High Price		High price in the set time period (Unit: JPY or point)	10245
9	Low_Price	Low Price		Low price in the set time period (Unit: JPY or point)	10235
10	Close_Price	Closing Price		Closing Price in the set time period (Unit: JPY or point)	10240
11	Trade_Volume	Trading Volume		Total trading volume in the set time period (Unit: JPY or point)	2986
12	VWAP	VWAP		VWAP at the end of the set time period (Unit: JPY or point) *Up to March 20, 2014 VWAP calculated based upon tick from opening of a trading day to the end of the set interval time *On and after March 24, 2014 VWAP calculated based upon tick from beggining of the set interval time to the end of the set interval time	10243.7559
13	Number_of_Trade	The number of executions		Number of executions in the set time period	83
14	Record_No	Recording Order	4 Ascending Order	Number is assigned firstly by trading date, secondly by local securities code and thirdly by trading execution (Ascending Order) . Before September 2022, the number is 5 digits. On and after September 2022, it is 12 digits. But the number is not necessarily a serial number.	01630 202209261230
15	Contract_Month	Contract Month		Contract Month of the product/contract (YYYYMM)	201103

※ Please refer Appendix 3 for further information on meaning of products previously traded on TSE/OSE.

※ Figures through September 17, 2021 include strategy trading. However, strategy trading is not included in the figures with regard to executed trade up to February 10, 2011 for products previously traded on OSE and with regard to that up to November 18, 2011 for products previously traded on TSE

※ Figures from September 21, 2021 don't include strategy trading.

※ From September 2022, holiday trading is included.

※ Flexible Futures is excluded.

### (2)Options

No.	Header (All lowercase on and after 2022/7)	Item	Sort Order	Description	Sample
1	Trade_Date	Trading date	1 Ascending Order	"One trading day" is from the night session of the business day to the day session of the following business day. Calendar date for the above " the day session of the following business day " is set. (YYYYMMDD)	20220926
2	Execution_Date	Execution date		Calendar date when transaction is actually conducted(YYYYMMDD) *On and after September 2022(no data before September 2022)	20220922
3	Index_Type/Underlying_Security_Code	Index Segment /Underlying Securities	2 Ascending Order	Indes segment is indicated. Please refer table of "Segment for the underlying index" in Appendix 3 for further information.	18
4	Put_Call_Type	Distinction of Put or Call	3 Ascending Order	Distinction of put or call is indicated(1:Put, 2:Call)	1
5	Security_Code	Local Securities Code	4 Ascending Order	Derivatives: 9-digit code Please refer to Appendix 3 for further information.	136020018
6	Session_ID	Session ID		Trading session segment: Morning and Afternoon sessions=999, Night sessions=003	003
7	Interval_Time	Interval Time		Per-minute time (HHMM) Example: 9:20 "0920", 13:30 "1330" *While 24:00 mid-night is indicates as "0000" under data specification, only "0" could be shown when opening a file in Excel or other application.	1630
8	Open_Price	Open Price		Open price in the set time period (Unit: JPY or point)	40
9	High_Price	High Price		High price in the set time period (Unit: JPY or point)	40
10	Low_Price	Low Price		Low price in the set time period (Unit: JPY or point)	40
11	Close_Price	Closing Price		Closing Price in the set time period (Unit: JPY or point)	40
12	Trade_Volume	Trading Volume		Total trading volume in the set time period (Unit: JPY or point)	15
13	VWAP	VWAP		VWAP at the end of the set time period (Unit: JPY or point) *Up to March 20, 2014 VWAP calculated based upon tick from opening of a trading day to the end of the set interval time *On and after March 24, 2014 VWAP calculated based upon tick from beggining of the set interval time to the end of the set interval time	10243.7559
14	Number_of_Trade	The number of executions		Number of executions in the set time period	1
15	Record_No	Recording Order	5 Ascending Order	Number is assigned firstly by trading date, secondly by local securities code and thirdly by trading execution (Ascending Order) . Before September 2022, the number is 5 digits. On and after September 2022, it is 12 digits. But the number is not necessarily a serial number.	01630 202209261230
16	Contract_Month	Contract Month		Contract Month of the product/contract (YYYYMM) Please note that two digit contract code is used instead of "MM" for Nikkei 225 Weekly Options and Nikkei 225 mini Options. For furthe information, please refer to Appendix 3	201102
17	Exercise_Price	Exercise Price		Exercise Price of product/contract (Unit: JPY or point)	10000
18	Cash_Futures_Type	Distinction of Cash or Futures		Indicates whether underlying products are cash or futures (1:Cash, 2: Futures)	1

※ Please refer to Appendix 3 for further information on meaning of products previously traded TSE/OSE.

※ Figures through September 17, 2021 include strategy trading. However, strategy trading is not included in the figures with regard to executed trade up to February 10, 2011 for products previously traded on OSE and with regard to that up to November 18, 2011 for products previously traded on TSE

※ From September 2022, holiday trading is included.

※ Flexible Options is excluded.

# One-Minute O/H/L/C Price(Commodity Derivatives)

## 1. Availability

Please refer to fee schedule document as availability is vary depending upon products

## 2. How to get

Download CSV file

## 3. Data Specifications

### (1) Futures

No.	Header	Item	Sort Order	Description	Sample
1	trade_date	Trade Date	1 Ascending Order	"One trading day" is from the night session of the business day to the day session of the following business day. Calendar date for the above " the day session of the following business day " is set. (YYYYMMDD)	20220926
2	Execution_Date	Execution date		Calendar date when transaction is actually conducted(YYYYMMDD) *On and after September 2022(no data before September 2022)	20220922
3	index_type	Index Segment	2 Ascending Order	Index segment is indicated. Please refer Appendix 3 for further information.	A0
4	security_code	Local Securities Code	3 Ascending Order	Derivatives: 9-digit code Please refer to Appendix 3 for further information	1651200A0
5	商品等	Products(Japanese)		Products(Japanese)	金標準先物
6	products	Products(Emglish)		Products(Emglish)	Gold Standard Futures
7	Session_ID	Session ID		Trading session segment: Morning and Afternoon sessions=999, Night sessions=003	003
8	Interval_Time	Interval Time		Per-minute time (HHMM) Example: 9:20 "0920", 13:30 "1330" *While 24:00 mid-night is indicates as "0000" under data specification, only "0" could be shown when opening a file in Excel or other application.	1630
9	Open_Price	Open Price		Open price in the set time period (Unit: JPY or point)	10245
10	High_Price	High Price		High price in the set time period (Unit: JPY or point)	10245
11	Low_Price	Low Price		Low price in the set time period (Unit: JPY or point)	10235
12	Close_Price	Closing Price		Closing Price in the set time period (Unit: JPY or point)	10240
13	Trade_Volume	Trading Volume		Total trading volume in the set time period (Unit: JPY or point)	2986
14	VWAP	VWAP		VWAP at the end of the set time period (Unit: JPY or point) VWAP calculated based upon tick from beggining of the set interval time to the end of the time	10243.7559
15	Number_of_Trade	The number of executions		Number of executions in the set time period	83
16	Record_No	Recording Order	4 Ascending Order	Number is assigned firstly by trading date, secondly by local securities code and thirdly by trading execution (Ascending Order) . Before September 2022, the number is 5 digits. On and after September 2022, it is 12 digits. But the number is not necessarily a serial number.	01630 202209261230
17	Contract_Month	Contract Month		Contract Month of the product/contract (YYYYMM) is set. *Space for Rolling-Spot Futures.	201103

※Figures through September 17, 2021 include those of strategy trading. . Off-auction transactions and error corrections are not included.

※ From September 2022, holiday trading is included.

### (2)Options

No.	Header	Item	Sort Order	Description	Sample
1	Trade_Date	Trading date	1 Ascending Order	"One trading day" is from the night session of the business day to the day session of the following business day. Calendar date for the above " the day session of the following business day " is set. (YYYYMMDD)	20220926
2	Execution_Date	Execution date		Calendar date when transaction is actually conducted(YYYYMMDD) *On and after September 2022(no data before September 2022)	20220922
3	Index_Type/Underlying_Security Code	Index Segment	2 Ascending Order	Index segment is indicated. Please refer to Appendix 3 for further information.	A0
4	Put_Call_Type	Distinction of Put or Call	3 Ascending Order	Distinction of put or call is indicated(1:Put, 2:Call)	1
4	Security_Code	Local Securities Code	4 Ascending Order	Derivatives: 9-digit code Please refer to Appendix 3 for further information	1350800A0
5	商品等	Products(Japanese)		Products(Japanese)	金先物オプション
5	products	Products(Emglish)		Products(Emglish)	Options on Gold Futures
6	Session_ID	Session ID		Trading session segment: Morning and Afternoon sessions=999, Night sessions=003	003
7	Interval_Time	Interval Time		Per-minute time (HHMM) Example: 9:20 "0920", 13:30 "1330" *While 24:00 mid-night is indicates as "0000" under data specification, only "0" could be shown when opening a file in Excel or other application	1630
8	Open_Price	Open Price		Open price in the set time period (Unit: JPY or point)	40
9	High_Price	High Price		High price in the set time period (Unit: JPY or point)	40
10	Low_Price	Low Price		Low price in the set time period (Unit: JPY or point)	40
11	Close_Price	Closing Price		Closing Price in the set time period (Unit: JPY or point)	40
12	Trade_Volume	Trading Volume		Total trading volume in the set time period (Unit: JPY or point)	15
13	VWAP	VWAP		VWAP at the end of the set time period (Unit: JPY or point) VWAP calculated based upon tick from beggining of the set interval time to the end of the time	10243.7559
14	Number_of_Trade	The number of executions		Number of executions in the set time period	83
15	Record_No	Recording Order	4 Ascending Order	Number is assigned firstly by trading date, secondly by local securities code and thirdly by trading execution (Ascending Order) . Before September 2022, the number is 5 digits. On and after September 2022, it is 12 digits. But the number is not necessarily a serial number.	01630 202209261230
16	Contract_Month	Contract Month		Contract Month of the product/contract (YYYYMM) is set; still, space is set on "Rolling Spot Futures".	201103
17	Exercise_Price	Exercise Price		Exercise Price of product/contract (Unit: JPY or point)	10000

※ Figures through September 17, 2021 include those of strategy trading. Off-auction transactions and error corrections are not included.

※ From September 2022, holiday trading is included.

## Tick Data(Derivatives)

### 1. Availability

Please refer to fee schedule document as availability is vary depending upon products

### 2. How to get

Download CSV file

### 3. Data Specifications

#### (1) Futures

No.	Header (All lowercase on and after 2022/7)	Item	Sort Order	Description	Sample
1	Trade_Date	Trading date	1 Ascending Order	*One trading day* is from the night session of the business day to the day session of the following business day. Calendar date for the above "the day session of the following business day" is set. Calendar date when transaction is actually conducted(YYYYMMDD). *Blank* is indicated up to February 10, 2011 for products previously traded on OSE. *Date of "Trading date" is indicated up to March 20, 2014 for products previously traded on TSE.	20220926
2	Make_Date(before September 2022) Execution_Date(on and after September 2022)	Making Date		Calendar date when transaction is actually conducted(YYYYMMDD). *Blank* is indicated up to February 10, 2011 for products previously traded on OSE. *Date of "Trading date" is indicated up to March 20, 2014 for products previously traded on TSE.	20220922
3	Index_Type	Index Segment	2 Ascending Order	Index segment is indicated. Please refer to Appendix 3 for further information.	18
4	Security_Code	Local Securities Code	3 Ascending Order	Derivatives: 9-digit code Please refer to Appendix 3 for further information.	160030018
5	Time	Time of Present Value		Indicate time when current price is decided(HHMMSSmmmm) *For products previously traded on OSE: HHMM up to 2/24/2006, HHMMSS for 2/27/2006-7/15/2016 and HHMMSSmmmm for on and after 7/19/2016 (Example)9H 20M "092000000" up to 2/24/2006 9H 20M 10 S "092010000" 2/27/2006-7/15/2016 9 H 20 M 10S123ms "092010123" on and after 7/19/2016 *For products previously traded on TSE: HHMM up to 3/20/2014, HHMMSS for 3/24/2014-7/15/2016 and HHMMSSmmmm for on and after 7/19/2016 (Example)9 H 20M "092000000" up to 3/20/2014 9H 20 M 10S "092010000" 3/24/2014-7/15/2016 9 H 20 M 10S123ms "092010123" on and after 7/19/2016 *In any case, while time is listed as "000000000" under data specification for trading on mid-night of 24H00M00S000ms, only "0" could be shown when opening a file in Excel or other application. * "163" or "164" is shown in Item "Time of Present Value" of the CSV files for the period from 9/21/2021 to 2/10/2022 (Item "Making Date" No.2 above) as "ms" (i.e. millisecond) information, but this is not correct due to systematic specification. As for the file for this period, pls use the value up to the second. Please note that the CSV files on and before 9/17/2021 and those on and after 2/14/2022 contain the correct values as "ms" (i.e. milliseconds) information.	163000000
6	Trade_Price	Present Value		Indicate current price(Unit: JPY or point)	16520
7	Price_Type	Type of Present Value		Type of current price is indicated(O.Opening, E.Closing, P.Opening = Closing, N.Middle Price(executed during auction session)) *On or after July 19, 2016, in case Opening=Closing, "O.Opening" is indicated rather than "P.Opening=Closing" *Blank* is indicated up to March 20, 2014 for products previously traded on TSE.	0
8	Trade_Volume	Trading volume		Volume when trading is executed (Unit: number of contract)	124
9	No	Sequence No.	4 Ascending Order	Number is assigned firstly by trading date, secondly by local securities code and thirdly by trading execution (Ascending Order), but the number is not necessarily a serial number.	1
10	Contract_Month	Contract Month		Contract Month of the product/contract (YYYYMM)	201503
11	sco_category	Execution by Strategy Trading		Strategy Trading Execution: "1", Others: "0" *on and after September 2022(no data before September 2022)	1

※ Please refer Appendix 3 for further information on meaning of products previously traded on TSE/OSE.

※ Figures through September 17, 2021 and from September, 2022 include strategy trading.

However, strategy trading is not included in the figures with regard to executed trade up to February 10, 2011 for products previously traded on OSE

and with regard to that up to November 18, 2011 for products previously traded on TSE.

※ Figures from September 21, 2021 to August 2022 do not include strategy trading.

※ From September 2022, holiday trading is included.

※ Flexible Futures is excluded.

#### (2)Options

No.	Header (All lowercase on and after 2022/7)	Item	Sort Order	Description	Sample
1	Trade_Date	Trading date	1 Ascending Order	*One trading day* is from the night session of the business day to the day session of the following business day. Calendar date for the above "the day session of the following business day" is set. Calendar date when transaction is actually conducted(YYYYMMDD). *Blank* is indicated up to February 10, 2011 for products previously traded on OSE. *Date of "Trading date" is indicated up to March 20, 2014 for products previously traded on TSE.	20220926
2	Make_Date(before September 2022) Execution_Date(on and after September 2022)	Making Date		Calendar date when transaction is actually conducted(YYYYMMDD). *Blank* is indicated up to February 10, 2011 for products previously traded on OSE. *Date of "Trading date" is indicated up to March 20, 2014 for products previously traded on TSE.	20220922
3	Index_Type/Underlying_Security_Code	Index Segment /Underlying Securities	2 Ascending Order	Index segment is indicated. Please refer table of "Segment for the underlying index" in Appendix 3 for further information.	18
4	Put_Call_Type	Distinction of Put or Call	3 Ascending Order	Distinction of put or call is indicated(1:Put, 2:Call)	1
5	Security_Code	Local Securities Code	4 Ascending Order	Derivatives: 9-digit code Please refer to Appendix 3 for further information.	130010018
6	Time	Time of Present Value		Indicate time when current price is decided(HHMMSSmmmm) *For products previously traded on OSE: HHMM up to 2/24/2006, HHMMSS for 2/27/2006-7/15/2016 and HHMMSSmmmm for on and after 7/19/2016 Example:9H 20M "092000000" up to 2/24/2006 9H 20M 10 S "092010000" 2/27/2006-7/15/2016 9 H 20 M 10S123ms "092010123" on and after 7/19/2016 *For products previously traded on TSE: HHMM up to 3/20/2014, HHMMSS for 3/24/2014-7/15/2016 and HHMMSSmmmm for on and after 7/19/2016 (Example) 9 H 20M "092000000" up to 3/20/2014 9H 20 M 10S "092010000" 3/24/2014-7/15/2016 9 H 20 M 10 S123ms "092010123" on and after 7/19/2016 *In any case, while time is listed as "000000000" under data specification for trading on mid-night of 24H00M00S000ms, only "0" could be shown when opening a file in Excel or other application. * "163" or "164" is shown in Item "Time of Present Value" of the CSV files for the period from 9/21/2021 to 2/10/2022 (Item "Making Date" No.2 above) as "ms" (i.e. millisecond) information, but this is not correct due to systematic specification. As for the file for this period, pls use the value up to the second. Please note that the CSV files on and before 9/17/2021 and those on and after 2/14/2022 contain the correct values as "ms" (i.e. milliseconds) information.	182121000
7	Trade_Price	Present Value		Indicate current price(Unit: JPY or point)	4
8	Price_Type	Type of Present Value		Type of price is indicated(O.Opening, E.Closing, P.Opening =Closing, N.Middle Price(executed during auction session)) *On or after July 19, 2016, in case Opening=Closing, "O.Opening" is indicated rather than "P.Opening=Closing" *Blank* is indicated up to March 20, 2014 for products previously traded on TSE.	0
9	Trade_Volume	Trading volume		Indicate trading volume when trading is executed (Unit: number of contract)	29
10	No	Sequence No.	5 Ascending Order	Number is assigned firstly by trading date, secondly by local securities code and thirdly by trading execution (Ascending Order), but the number is not necessarily a serial number.	1
11	Contract_Month	Contract Month		Contract Month of the product/contract (YYYYMM) Please note that two digit contract code is used instead of "MM" for Nikkei 225 Weekly Options and Nikkei 225 mini Options. For further information, please refer to Appendix 3	201501
12	Exercise_Price	Exercise Price		Exercise Price of product/contract (Unit: JPY or point)	10000
13	Cash_Futures_Type	Distinction of Cash or Futures		Indicate whether underlying products are cash or futures (1:Cash, 2: Futures)	1

※ Please refer to Appendix 3 for further information on meaning of products previously traded TSE/OSE.

※ Figures through September 17, 2021 include strategy trading. However, strategy trading is not included in the figures with regard to executed trade up to February 10, 2011 for products previously traded on OSE and with regard to that up to November 18, 2011 for products previously traded on TSE

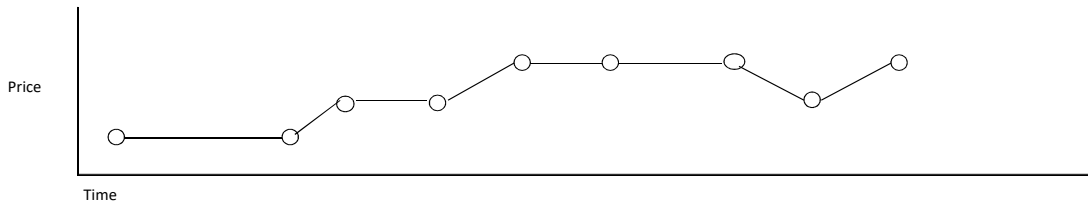
※ From September 2022, holiday trading is included.

※ Flexible Options is excluded.



The tick data specifications are as follows.

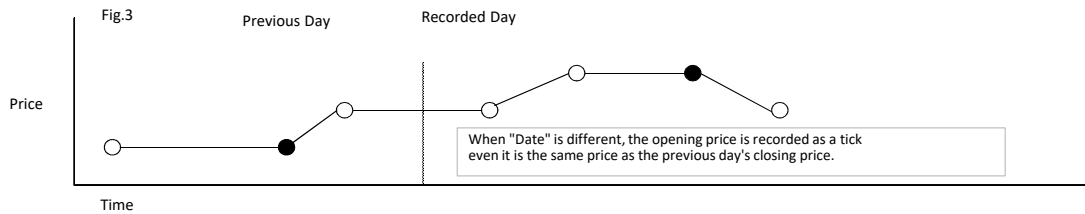
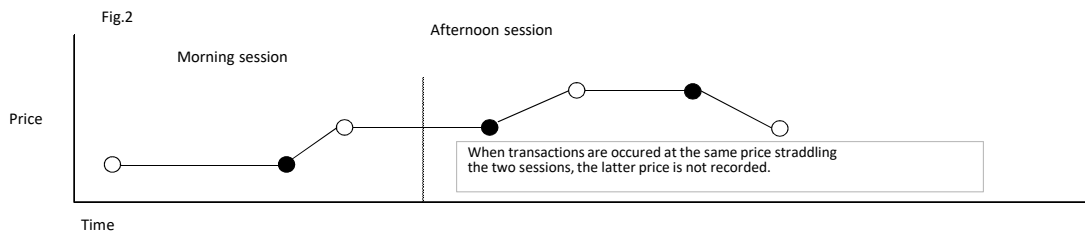
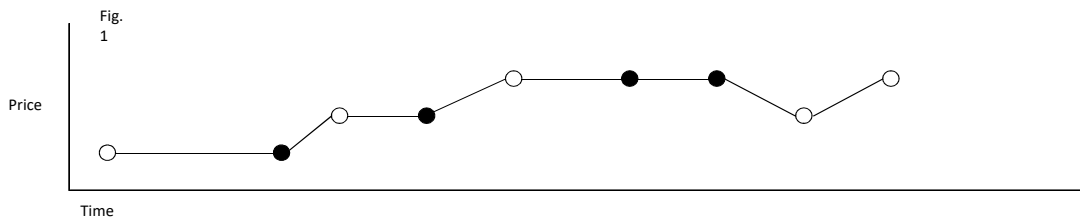
Data records the history of price change of a day per issue, for example, prices at points circled in the figure below.



**Be careful!**

The tick data specifications of products previously traded on TSE before 2006/01/30 are as follows.

Data only records the history of price change. (Only the price labeled with white circle is recorded in Fig 1  
 If the close price of the morning session and the open price of the afternoon session is the same, the latter price is not recorded. (Fig. 2) If the previous day's closing price and the open price is the same the latter price is also recorded. (Fig 3) .



# Tick Data(Commodity Derivatives)

## 1. Availability

Available data period : 2020/7/27 (Day Trading)-

## 2. How to get

Download CSV file

## 3. Data Specifications

### (1) Futures

No.	Header	Item	Sort Order	Description	Sample
1	trade_date	Trading date	1 Ascending Order	"One trading day" is from the night session of the business day to the day session of the following business day. Calendar date for the above "the day session of the following business day" is set. (YYYYMMDD)	20220926
2	execution_date	Execution Date		Calendar date when transaction is actually conducted(YYYYMMDD).	20220922
3	index_type	Index Segment	2 Ascending Order	Index segment is indicated. Please refer to Appendix 3 for further information.	A1
4	security_code	Local Securities Code	3 Ascending Order	Derivatives: 9-digit code Please refer to Appendix 3 for further information.	1650800A1
5	商品等	Products (Japanese)		Products (Japanese)	
6	products	Products (English)		Products (English)	
7	time	Time of Present Value		Indicate time when current price is decided(HHMMSSmmm)*Japan Time *In any case, while time is listed as "000000000" under data specification for trading on mid-night of 24H00M00S000ms, only "0" could be shown when opening a file in Excel or other application. * "163" or "164" is shown in Item "Time of Present Value" of the CSV files for the period from 9/21/2021 to 2/10/2022 (Item "Execution Date" No.2 above) as "ms" (i.e. millisecond) information, but this is not correct due to systematic specification. As for the file for this period, pls use the value up to the second. Please note that the CSV files on and before 9/17/2021 and those on and after 2/14/2022 contain the correct values as "ms" (i.e. milliseconds) information.	163000000
8	trade_price	Present Value		Indicate current price(Unit: JPY or point)	16520
9	price_type	Type of Present Value		Type of current price is indicated(O:Opening, E:Closing, N:Middle Price(executed during auction session))	O
10	trade_volume	Trading volume		Volume when trading is executed (Unit: number of contract)	124
11	sequence_number	Sequence No.	4 Ascending Order	Number is assigned firstly by trading date, secondly by local securities code and thirdly by trading execution, but the number is not necessarily a serial number.	1
12	contract_month	Contract Month		Contract Month of the product/contract (YYYYMM) *Space for Rolling-Spot Futures.	201503
13	sco_category	Excution by Strategy Trading		Strategy Trading Execution: "1", Others: "0"	1

※ Figures include those of strategy trading. Off-auction transactions and error corrections are not included.

※ The contract price of contracts between SCOs (SCO classification "1") is the quoted price of the leg product.

(SCOs price is included in the O/H/L/C price through September 17, 2021)

※ From September 2022, holiday trading is included.

### (2) Options

No.	Header	Item	Sort Order	Description	Sample
1	trade_date	Trading date	1 Ascending Order	"One trading day" is from the night session of the business day to the day session of the following business day. Calendar date for the above "the day session of the following business day" is set. (YYYYMMDD)	20220926
2	execution_date	Execution Date		Calendar date when transaction is actually conducted(YYYYMMDD).	20220922
3	index_type	Index Segment	2 Ascending Order	Index segment is indicated. Please refer to Appendix 3 for further information.	A0
4	Put_Call_Type	Distinction of Put or Call	3 Ascending Order	Distinction of put or call is indicated(1:Put, 2:Call)	1
5	Security_Code	Local Securities Code	4 Ascending Order	Derivatives: 9-digit code Please refer to Appendix 3 for further information	1350800A0
6	商品等	Products (Japanese)		Products (Japanese)	
7	products	Products (English)		Products (English)	
8	Time	Time of Present Value		Indicate time when current price is decided(HHMMSSmmm)*Japan Time *In any case, while time is listed as "000000000" under data specification for trading on mid-night of 24H00M00S000ms, only "0" could be shown when opening a file in Excel or other application.	163000000
9	Trade Price	Present Value		Indicate current price(Unit: JPY or point)	16520
10	Price_Type	Type of Present Value		Type of current price is indicated(O:Opening, E:Closing, N:Middle Price(executed during auction session))	O
11	Trade_Volume	Trading volume		Indicate trading volume when trading is executed (Unit: number of contract)	124
12	No	Sequence No.	5 Ascending Order	Number is assigned firstly by trading date, secondly by local securities code and thirdly by trading execution (Ascending Order), but the number is not necessarily a serial number.	1
13	contract_month	Contract Month		Contract Month of the product/contract (YYYYMM)	201503
14	Exercise Price	Exercise Price		Exercise Price of product/contract (Unit: JPY or point)	10000
15	sco_category	Excution by Strategy Trading		Strategy Trading Execution: "1", Others: "0"	1

※ Figures through September 17, 2021 include those of strategy trading. Off-auction transactions and error corrections are not included.

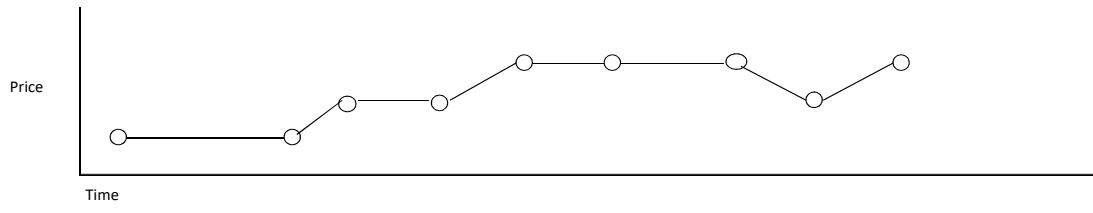
※ The contract price of contracts between SCOs (SCO classification "1") is the quoted price of the leg product.

(SCOs price is included in the O/H/L/C price through September 17, 2021)

※ From September 2022, holiday trading is included.

The tick data specifications are as follows.

Data records the history of price change of a day per issue, for example, prices at points circled in the figure below.



## Tick Data(Commodity Derivatives(Posted on previous TOCOM website))

### 1. Availability

From 2003 to 2021 (For 2021, it will be until September 17th.)

\*Due to the difference of listing date, the suspension of transactions and delisting, there might be a period when the products data were not partially included.

\*There is no Night Session on the trading day of September 20, 2016 (the calendar date of September 16, 2016).

Execution Time(Item F) on and after September 20, 2016 is displayed in reverse chronological order.

### 2. How to get

Download CSV file

### 3. Data Specifications

Item	Item Name	Format	Description
A	Trade Date	Char	Trade Date (YYYYMMDD)
B	Type	Char	"11":Physically Delivered Futures Transaction "12":Cash-settled Futures Transaction "21":Call Options Transaction "22":Put Options Transaction
C	Product	Char	Product Code 11:GOLD 12:SILVER 13:PLATINUM 14:PALLADIUM 16:GOLD MINI 17:PLATINUM MINI 18:GOLD ROLLING SPOT 19:PLATINUM ROLLING SPOT 21:Aluminum 31:GASOLINE 32:KEROSENE 33:CRUDE OIL 34:GAS OIL 37:CHUKYO GASOLINE 38:CHUKYO KEROSENE 41:Cash-settled BARGE GASOLINE 42:Platts Cash-settled BARGE KEROSENE 43:Platts Cash-settled BARGE GAS OIL 44:Cash-settled LORRY GASOLINE 45:Platts Cash-settled LORRY KEROSENE 46:Platts Cash-settled LORRY GAS OIL 61:West Area Baseload Electricity 62:West Area Peakload Electricity 63:East Area Baseload Electricity 64:East Area Peakload Electricity 81:RSS3 RUBBER 82:TSR20 RUBBER 201:Corn 202:Soybeans 204:Azuki Beans 211:Raw Sugar
D	Contract Month	Char	Contract Month of the product/contract (YYYYMM)
E	Exercise Price	Varchar	Exercise Price of product/contract (Only for Options)
F	Execution Time	Char	Indicate time when price is decided (HHMMSS)
G	Execution Price	Varchar	Indicate execution price
H	Execution Volume	Varchar	Volume of execution
I	SCO	Char	Strategy Trading Execution: "1" * Standard Combination Order (Calendar) is an order to execute the simultaneous purchase and sale of "two different contract months with the same underlying commodity." or "two different series of different commodities" as a single order by specifying the price differential.

\*Until May 1, 2009, a forward month is set in item E(Exercise Price) (only to Spread Trading), subsequent items are replaced according to the item name.

\*The data of the products(Precious Metals, Rubber, Agricultural) transferred to Osaka Exchange is recorded until July 24, 2020.

\*Item F(Execution Time) on and after September 20, 2016 is displayed in reverse chronological order.

# Closing Price (Total Return Index etc)

## 1. Available data period

Since the available data period varies by each index, refer to Appendix 1.

## 2. Data Specifications

No.	Item	Header Name	Sample	Description
1	Index Code	Index Code	6000	Index code
2	Target Index	index	TOPIX	Target Index
3	Date	Date	20130428	YYYYMMDD
4	Closing Price	Close price	1644.22	Closing price

# PER,PBR

## 1. Data provision period

Old format (Japanese only): 2011/1 – 2019/12  
New format: 2020/1 –

## 2. Data outline / update schedule

We provide PERs/PBRs, etc. (consolidated and non-consolidated) for domestic companies listed on the Tokyo Stock Exchange (TSE).  
Files are provided on the 20th of each month (if a national holiday, the following business day).

## 3. Data provided

Data covers domestic companies listed on the TSE as of the last business day of the month preceding the date of provision (hereinafter referred to as the "calculation base date").

We provide PERs and PBRs, etc. (consolidated and non-consolidated) calculated based on the stock price on the calculation base date and financial data such as net assets and net income disclosed in the Earnings Release for the latest accounting period within 3 months before the calculation base date.

However, the following issues will not be covered:

- Issues not included in a TSE stock price index such as TOPIX as of the calculation base date (for example, issues carrying out an initial listing will not be included into TOPIX or other stock price indices until the end of the month following their initial listing date, meaning that data for these issues at the end of their listing month will not be provided)
- Corporations that have no past financial data in their current form, such as holding companies that have newly listed via a stock swap, etc. (technical listings)

## 4. How to get the data

Excel file download

## 5. Data Specifications (since the old format is only available in Japanese, only the new format is described below.)

No.	Header Name	Sample	Description
1	年月日 Date	2010/02/26	Calculation base date for PERs/PBRs
2	市場区分 Market Sector	0101	(Before 2022/3) 0101: 1st section 0102: 2nd section 0104: Mothers 0106: JASDAQ Standard 0107: JASDAQ Growth  (After 2022/4) 0111: Prime 0112: Standard 0113: Growth
3	市場区分名	(Before 2022/3) 市場一部内国株  (After 2022/4) プライム市場内国株	Section in Japanese. (Before 2022/3) 東証一部内国株、東証二部内国株、東証マザーズ内国株、JASDAQ スタンダード内国株、JASDAQ グロース内国株  (After 2022/4) プライム市場内国株、スタンダード市場内国株、 グロース市場内国株
4	Section	(Before 2022/3) 1st Section Domestic Stock  (After 2022/4) Prime Domestic Stock	Section in English. (Before 2022/3) 1st Section Domestic Stock, 2nd Section Domestic Stock, Mothers Domestic Stock, JASDAQ Standard Domestic Stock, JASDAQ Growth Domestic Stock  (After 2022/4) Prime Domestic Stock, Standard Domestic Stock, Growth Domestic Stock
5	種別コード Industry Code	0050	Industry code from 33 industry categories
6	種別	水産・農林業	Industry name from 33 industry categories in Japanese
7	Industry	Fishery Agriculture & Forestry	Industry name from 33 industry categories in English
8	規模区分名	小型株	Size-based TOPIX Sub-index (if applicable) in Japanese
9	Sector	Small	Size-based TOPIX Sub-index (if applicable) in English Large, Medium, Small This will be a space if not applicable.
10	インデックス区分 Index Sector*	6	TOPIX New Index Series (if applicable) 1: TOPIX Core 30 2: TOPIX Large 70 4: TOPIX Mid 400 6: TOPIX Small 1 7: TOPIX Small 2 Z: Other This will be a space if the issue was listed on the 1st Section before March 2022 and is a constituent of TOPIX and not a constituent of Size-based TOPIX Sub-indices after April 2022.
11	銘柄コード Code	13010	Securities Code (4-digit number + 0)
12	銘柄名	極洋 普通株式	Issue name in Japanese
13	Issues	KYOKUYO CO.,LTD.	Issue name in English
14	株価 Stock Price	126	Stock price used to calculate PER/PBR (closing price or final special quote, etc., on the calculation base date)
15	計算用株式数 Share For Calculation	508,574,884	Number of issued shares used to calculate PER/PBR.
		連結	Consolidated
16	決算年月日 Fiscal Date	2009/03/31	The latest accounting period end date within 3 months before the calculation base date.
17	1株当たり当期純利益 Net Income Per Share	-12.82	Net Income(consolidated) / Share For Calculation
18	1株当たり純資産 Net Assets Per Share	131.50	Net Assets(consolidated) / Share For Calculation
19	PER	-	Stock Price / Net Income Per Share(consolidated) (if Net Income is negative, a "-" is shown.)
20	PBR	1.0	Stock Price / Net Assets Per Share(consolidated) (if Net Assets is negative, a "-" is shown.)
21	親会社株主に帰属する 当期純利益 Net Income	-6,520,320,000	Annualized amount of consolidated net income (non-consolidated net income for non-consolidated companies). However, for companies that issue preferred shares, the figures exclude preferred share dividends.

22	純資産 Net Assets	66,880,000,000	Consolidated net assets (non-consolidated net assets for non-consolidated companies). However, for companies that issue preferred shares, the figures exclude the net assets of preferred shares.
23	優先株配当金 Preferred Stock Dividends**	238,320,000	Total amount of preferred stock dividends based on the consolidated accounting period.
24	優先株純資産 Preferred Stock Net Assets**	11,030,000,000	Net assets of preferred stock based on the consolidated accounting period. (Stock Price x number of preferred stocks)
単体 Non-consolidated			
25	決算年月日 Fiscal Date	2009/03/31	The latest accounting period end date within 3 months before the calculation base date.
26	1株当たり当期純利益 Net Income Per Share	-16.51	Non-Consolidated Net Income / Share For Calculation
27	1株当たり純資産 Net Assets Per Share	133.02	Non-Consolidated Net Assets / Share For Calculation
28	PER	-	Stock Price / Net Income Per Share (if Net Income is negative, a “-” is shown.)
29	PBR	0.9	Stock Price / Net Assets Per Share (if Net Assets is negative, a “-” is shown.)
30	当期純利益 Net Income	-8,397,320,000	Annualized amount of non-consolidated net income stated in Earnings Release. However, for companies that issue preferred stocks, the figures exclude preferred stock dividends.
31	純資産 Net Assets	67,653,000,000	Non-consolidated net assets stated in Earnings Release. However, for companies that issue preferred stocks, the figures exclude the net assets of preferred stocks.
32	優先株配当金 Preferred Stock Dividends**	238,320,000	Total amount of preferred stock dividends based on the non-consolidated accounting period.
33	優先株純資産 Preferred Stock Net Assets**	11,030,000,000	Net assets of preferred stock based on the non-consolidated accounting period (issue price x number of preferred stocks).
34	単体流用フラグ Non-consolidated Diversion Flag	2	Shows whether there is consolidated financial data. 1: Consolidated data is not available 2: Consolidated data is available When “1” is shown, No. 16 to No. 24 are set to non-consolidated data.

\*TOPIX Small is divided into “TOPIX Small 1” and “TOPIX Small 2”. “TOPIX Small 1” represents TOPIX Small stocks that are also constituents of TOPIX 1000, and “TOPIX Small 2” represents TOPIX Small stocks that are not constituents of TOPIX 1000.

\*\*For issues where preferred stock is listed, the following figures are set in the Preferred Stock Dividends column.

Before June 2023 : Preferred Stock Net Income

From July 2023 onwards : Preferred Stock Dividends

(Notes on data)

-For companies that do not have consolidated financial results, consolidated figures for PER and PBR are calculated using non-consolidated results.

-Financial data are based on the fiscal year end and actual results. Net income, net assets, preferred stock dividends, and preferred stock net assets (#21-#24, #30-#33) are updated once a year, three months after the fiscal year end.

-For issues that do not have a 12-month fiscal year end, PER is calculated by annualizing net income, etc.

-Data sent when using the Historical Data Service is as of the calculation base date (corrections to financial data after the calculation base date will not be reflected.)

# Open Interest of Margin Transactions

## 1. Available data period

2002/1/4~

## 2. Summary of Information Provided

### ① Detail

The detailed records record the open interest of margin transactions for each security listed on the TSE (domestic stocks, domestic investment trusts, etc. as well as foreign stocks and foreign depository receipts, etc.

### ② Total

The aggregate records display totals for (a) loan issues, (b) margin issues, and (c) other issues (non-loan, non-margin), as well as (d) the grand totals for (a), (b) and (c) categorized by (e) TSE First Section, (f) TSE Second Section, (g) Mothers, (h) investment trusts, etc., (j) JASDAQ, and (k) TOKYO PRO Market, as well as (i) the sum of (e) - (h) and (j) - (k).

## 3. Data Specifications

No.	Item	Sample	Description(2022/4/4~)	Description(~2022/4/1)
1	Local Code	14080	<p>○ When data item 2 (Total / Detail Classification) is "0" (Detail), 9-digit code comprising 4 single-byte spaces, a 4-digit securities code assigned by the Securities Identification Code Committee, and a 1-digit reserve code is set.</p> <p>For stocks, investment trusts, etc., set the securities code (five digits). The issue code is followed by a single "0" when there is no stocks reserve code.</p> <p>For example, 6758 becomes △△△△67580</p> <p>○ When data item 2 is other than "0", all spaces</p>	<p>○ When data item 2 (Total / Detail Classification) is "0" (Detail), 9-digit code comprising 4 single-byte spaces, a 4-digit securities code assigned by the Securities Identification Code Committee, and a 1-digit reserve code is set.</p> <p>For stocks, investment trusts, etc., set the securities code (five digits). The issue code is followed by a single "0" when there is no stocks reserve code.</p> <p>For example, 6758 becomes △△△△67580</p> <p>○ When data item 2 is other than "0", all spaces</p>
2	Total / Detail Classification	0	<p>Detailed Records and Aggregate Records Classification Codes</p> <p>0: Detail            1: Loan issues total            2: Loan issues TSE Prime Market total            3: Loan issues TSE Standard Market total            4: Loan issues Growth Market total            5: Loan issues investment trusts, etc. total            6: Margin issues total            7: Margin issues TSE Prime Market total            8: Margin issues TSE Standard Market total            9: Margin issues Growth total            A: Margin issues investment trusts, etc. total            B: Other issues (non-loan, non-margin) total            C: Other issues (non-loan, non-margin) TSE Prime Market total            D: Other issues (non-loan, non-margin) TSE Standard Market total            E: Other issues (non-loan, non-margin) Growth total            F: Other issues (non-loan, non-margin) investment trusts, etc. total            G: Grand total            H: TSE Prime Market total            I: TSE Standard Market total            J: Growth Market total            K: Investment trusts, etc. total            M: Loan issues TOKYO PRO Market total            O: Margin issues TOKYO PRO Market total            Q: Other issues (non-loan, non-margin) TOKYO PRO Market total            S: TOKYO PRO Market total</p>	<p>Detailed Records and Aggregate Records Classification Codes</p> <p>0: Detail            1: Loan issues total            2: Loan issues TSE First Section total            3: Loan issues TSE Second Section total            4: Loan issues Mothers total            5: Loan issues investment trusts, etc. total            6: Margin issues total            7: Margin issues TSE First Section total            8: Margin issues TSE Second Section total            9: Margin issues Mothers total            A: Margin issues investment trusts, etc. total            B: Other issues (non-loan, non-margin) total            C: Other issues (non-loan, non-margin) TSE First Section total            D: Other issues (non-loan, non-margin) TSE Second Section total            E: Other issues (non-loan, non-margin) Mothers total            F: Other issues (non-loan, non-margin) investment trusts, etc. total            G: Grand total            H: TSE First Section total            I: TSE Second Section total            J: Mothers total            K: Investment trusts, etc. total            L: Loan issues JASDAQ total            M: Loan issues TOKYO PRO Market total            N: Margin issues JASDAQ total            O: Margin issues TOKYO PRO Market total            P: Other issues (non-loan, non-margin) JASDAQ total            Q: Other issues (non-loan, non-margin) TOKYO PRO Market total            R: JASDAQ total            S: TOKYO PRO Market total</p>
3	Total Short Position	200	Total margin trading (negotiable and standardized margin trading) weekend short positions	Total margin trading (negotiable and standardized margin trading) weekend short positions
4	Balance from Previous Week's Short Position	-500	Total margin trading (negotiable and standardized margin trading) weekend short positions compared with previous week	Total margin trading (negotiable and standardized margin trading) weekend short positions compared with previous week



5	Total Long Position	62200	Total margin trading (negotiable and standardized margin trading) weekend long positions	Total margin trading (negotiable and standardized margin trading) weekend long positions
6	Balance from Previous Week's Long Position	-700	Total margin trading (negotiable and standardized margin trading) weekend long positions compared with previous week	Total margin trading (negotiable and standardized margin trading) weekend long positions compared with previous week
7	Short Position for Negotiable Margin	200	Negotiable margin trading weekend short positions	Negotiable margin trading weekend short positions
8	Balance from Previous Week's Short Position	-500	Negotiable margin trading weekend short positions compared with previous week	Negotiable margin trading weekend short positions compared with previous week
9	Short Position for Standardized Margin Transactions	0	Standardized margin trading weekend short positions	Standardized margin trading weekend short positions
10	Balance from Previous Week's Short Position	0	Standardized margin trading weekend short positions compared with previous week	Standardized margin trading weekend short positions compared with previous week
11	Long Position for Negotiable Margin	35800	Negotiable margin trading weekend long positions	Negotiable margin trading weekend long positions
12	Balance from Previous Week's Long Position	100	Negotiable margin trading weekend long positions compared with previous week	Negotiable margin trading weekend long positions compared with previous week
13	Long Position for Standardized Margin Transactions	26400	Standardized margin positions weekend long positions	Standardized margin positions weekend long positions
14	Balance from Previous Week's Long Position	-800	Standardized margin positions weekend long positions compared with previous week	Standardized margin positions weekend long positions compared with previous week
15	Issue Types	1	Issue Classifications (Before 2009/8) 1 : Loan issues 2 : Margin issues 3 : Other issues (non-loan, non-margin) △: Set single-byte space in the aggregate records.  (After 2009/9) 1 : Margin issues 2 : Loan issues 3 : Other issues (non-loan, non-margin) △: Set single-byte space in the aggregate records.	Issue Classifications (Before 2009/8) 1 : Loan issues 2 : Margin issues 3 : Other issues (non-loan, non-margin) △: Set single-byte space in the aggregate records.  (After 2009/9) 1 : Margin issues 2 : Loan issues 3 : Other issues (non-loan, non-margin) △: Set single-byte space in the aggregate records.
16	Record Date	20141128	Record date is set in YYYYMMDD format. When the month or date is single-digit, a "0" is placed in the first M or D column. For example, May 9, 2005 is set as "20050509"	Record date is set in YYYYMMDD format. When the month or date is single-digit, a "0" is placed in the first M or D column. For example, May 9, 2005 is set as "20050509"

\*Re

The classifications of the aggregate records relate to the values set in "Total/Detail Classification" are as follows.

	(a) Loan Issues	(b) Margin Issues	(c) Other Issues (Non-loan, non-margin)	(d) Total of (a), (b) and (c)
(i) Total of (e) - (h) and (j) - (k)	1	6	B	G
(e) TSE First Section (including First Section foreign stocks)	2	7	C	H
(f) TSE Second Section (including Second Section foreign stocks)	3	8	D	I
(g) Mothers (including Mothers foreign stocks)	4	9	E	J
(h) Investment Trusts, Etc. (including other foreign securities)	5	A	F	K
(j) JASDAQ	L	N	P	R
(k) TOKYO PRO Market	M	O	Q	S

# TOPIX Beta

## 1. Available data period

2011/12~

## 2. Summary of Information Provided

The data is calculated and published per quarter.

## 3. Data Specifications

### (1) index Beta

No.	Item	Sample	Description
1	Beta(yyyy.mm-yyyymm)	1.06	Beta based on the data of the last 60 months
2	Coefficient of determination	0.98	Coefficient of determination of beta based on the data of the last 60 months
3	Rate of return	7.07	Rate of return based on the data of the last 60 months
4	Sigma	5.55	Sigma based on the data of the last 60 months
5	Beta(yyyy.mm-yyyymm)	1.09	Beta based on the data of the last 30 months
6	Coefficient of determination	0.98	Coefficient of determination of beta based on the data of the last 30 months
7	Rate of return	-3.1	Rate of return based on the data of the last 30 months
8	Sigma	5.65	Sigma based on the data of the last 30 months
9	Beta(yyyy.mm-yyyymm)	1.03	Beta based on the data of the period between 31 months ago and 60 months ago
10	Coefficient of determination	0.99	Coefficient of determination of beta based on the data of the period between 31 months ago and 60 months ago
11	Rate of return	18.31	Rate of return based on the period between 31 months ago and 60 months ago
12	Sigma	5.4	Sigma based on the data of the period between 31 months ago and 60 months ago

### (2) stock Beta

No.	Item	Sample	Description
1	No.	1	Serial number by issue
2	Code	1301	This is the code prescribed by the Security Code Council.
3	Issues(Japanese)	極洋	Issue name(Japanese)
4	Issues(English)	KYOKUYO CO., LTD.	Issue name(English)
5	Market Segments(Japanese)	プライム	Market Segments(Japanese) (Set for data after June 2022)
6	Market Segments(English)	Prime	Market Segments(English) (Set for data after June 2022)
7	mark(30 or more but under 60 months)	*	In the case that the data period is 30 months or more but less than 60 months, this shows "*". In the case that the data period is more than
8	Industrial Classifications(Japanese)	水産・農林業	Industrial Classifications (Japanese)
9	Industrial Classifications	Fishery, Agriculture & Forestry	Industrial Classifications (English)
10	Beta(yyyy.mm-yyyymm)	0.62	Beta based on the data of the last 60 months
11	Coefficient of determination	0.39	Coefficient of determination of beta based on the data of the last 60 months
12	Rate of return	8.67	Rate of return based on the data of the last 60 months
13	Sigma	5.15	Sigma based on the data of the last 60 months
14	Beta(2012.4-2014.9)	0.6	Beta based on the data of the last 30 months
15	Coefficient of determination	0.36	Coefficient of determination of beta based on the data of the last 30 months
16	Rate of return	13.36	Rate of return based on the data of the last 30 months
17	Sigma	5.28	Sigma based on the data of the last 30 months

#### 4. Beta, Coefficient of determination and rate of return etc.

##### (1) $\beta$

Measure of a stock's relative volatility. Beta is the covariance of a stock in relation to the rest of the stock market. TOPIX has a beta coefficient of 1. Any stock with a higher beta is more volatile than the market, and any with a lower beta can be expected to rise and fall more slowly than the market.

$R_i = a + b * R_m$   $R_i$  : Rate of return issue of  $i$  (ex rights adjusted)

$R_m$  : Rate of return for TOPIX

##### (2) Coefficient of determination

What is important when calculating beta is to find out how well the former equation fits.

The measure of this fitness is called coefficient of determination in statistical terms. The coefficient of determination ranges from 0 to 1, movement of each description can be mostly explained by that of TOPIX. Beta has a high capability of explanation.

Through each coefficient of determination of the description is not so large, it is proved that it comes closer to 1 by increasing the number of descriptions in portfolio.

The coefficient of determination on this table only explains beta of the past and it does not guarantee beta in the future.

##### (3) Rate of return

Rate of return is to measure how much the earnings (profit return from advances + dividend) are compared with front-end investment.

It can be defined as follows:

Monthly rate of return = (month-end stock price - preceding month-end stock price + monthly dividend per stock) / preceding month-end stock price \*100

Ex rights by capital increase during the above period were adjusted by ex-right-revised stock price. Figures on the table are converted into yearly rate.

##### (4) Sigma

Sigma is the standard deviation of monthly rate of returns on each stock for period of calculation. While beta indicates the risk which cannot be eliminated even by the diversified investment, sigma indicates the total risk of each stock, which includes beta and risk which can be eliminated.

# TOPIX End of month Master Of Index

## 1. Available data period

Data available from 2015/11

## 2. Summary of Information Provided

Includes data such as the Index Constituents master data of the last business day of the month.

The monthly data(as of the end of the month) is updated on or after 4:20 pm (Japan time) on the last business day of the following month.

## 3. How to get

Download csv file

## 4. Data Specifications

No.	Item	Header Name	Sample	Description
1	Date	Date	20151130	Effective date of the data
2	Local Code	Local Code	21810	Unique identifying code for each constituent, as set by the Securities Identification Code Committee
3	Name	Name	Temp Holdings Co.,Ltd.	English name for the constituent
4	ISIN	ISIN	JP3547670004	ISIN code for the constituent
5	Index Classification Code	Index Classification Code	0111	Indicates the market segment  Up to the data for March 2022 0101:TOPIX 0102:2nd Section 0104:Mothers 0106:JASDAQ Standard 0107:JASDAQ Growth 0109:REIT  From the data for April 2022 0111:Prime 0112:Standard 0113:Growth 0109:REIT
6	Index Classification	Index Classification	Prime	Corresponding English name for the index classification code noted in 5, above.
7	Sector Code	Sector Code	9050	Sector classification for the constituent
8	Sector	Sector	Services	Corresponding English name for the sector code in 7, above
9	Size Code (TOPIX)	Size Code (TOPIX)	2	The size code 1 classification set if a constituent is a component of Size-based TOPIX sub-indices
10	Size (TOPIX)	Size (TOPIX)	Medium	Corresponding English name for the size code 1 in 9, above
11	Size Code (New Index Series)	Size Code (New Index Series)	4	The size code 2 classification set if a constituent is a component of a new index series
12	Size (New Index Series)	Size (New Index Series)	TOPIX Mid400	Corresponding English name for the size code 2 in 11.
13	Close for Indexes Calculation	Close for Indexes Calculation	1988	Closing or other applicable price used for index calculation on the effective date
14	No. of Shares	No. of Shares	117830976.5	Number of shares for index calculation reflecting FFW and others on effective date (Units: Shares)
15	Dividend Amount	Dividend Amount	2	Forecast dividend per share relating to ex-dividend and final dividend adjustment per share (Units:Yen) If no dividend, then set NULL. Final dividend adjustment per share is calculated as follows. Dividend per share reported in the "Earnings Digest" - Estimated dividend per share
16	Aggregate Dividend Amount	Aggregate Dividend Amount	235661953	Sum of (Product of the forecast dividend per share relating to the ex-dividend, and the number of constituent shares as of the business day prior to the ex-dividend date) and (total amount for final dividend adjustment) for the constituent.(Units: Yen) If no dividend, then set to NULL. Total amount for final dividend adjustment is calculated as follows. Total dividend amount reported in the "Earnings Digest" -
17	Change in No. of Shares	Change in No. of Shares	109772	Number of constituent shares in 14, above, less the number of constituent shares as of the date of data provision
18	CMV	CMV	234248000000	Closing market value on the effective date the data for the constituent is applied (Unit: Yen)
19	Trading Unit	Trading Unit	100	Indicates the trading unit of the constituent
20	FFW	FFW	0.5	Indicates the free-float weight applied to the each index.
21	No. of Shares before FFW	No. of Shares before FFW	235661953	Indicates the number of constituent shares (100% type) (Units: Shares)
22	Calculation Base Price	Calculation Base Price	1976	The first price to be used in calculating the index when the price of the constituent has not changed (due to contract terms or special market conditions) in the time prior to the timing of the initial index calculation on the effective date of the data
23	Index Code	Index Code	0000	Index code for stock price index 0000:TOPIX 0070:Tokyo Stock Exchange Growth Market 250 Index* 0075:Tokyo Stock Exchange REIT Index 5000:Tokyo Stock Exchange Prime Market Index 5001:Tokyo Stock Exchange Standard Market Index 5002:Tokyo Stock Exchange Growth Market Index (Set for data after April 2022)
24	Index Name	Index Name	TOPIX	English name of the stock index (Set for data after April 2022)

\*The name of the index was changed from "Tokyo Stock Exchange Mothers Index" to "Tokyo Stock Exchange Growth Market 250 Index" on November 6, 2023.

# JPX–Nikkei Index 400 End of month Master Of Index

## 1. Available data period

Data available from 2015/11

## 2. Summary of Information Provided

Includes data such as the Index Constituents master data of the last business day of the month.

The monthly data(as of the end of the month) is updated on or after 4:20 pm (Japan time) on the last business day of the following month.

## 3. How to get

Download csv file

## 4. Data Specifications

No.	Item	Header Name	Sample	Description
1	Date	Date	20151130	Effective date of the data
2	Local Code	Local Code	21810	Unique identifying code for each constituent, as set by the Securities Identification Code Committee
3	Name	Name	Temp Holdings Co.,Ltd.	English name for the constituent
4	ISIN	ISIN	JP3547670004	ISIN code for the constituent
5	Index Classification Code	Index Classification Code	0111	Indicates the market segment  Up to the data for March 2022 0101:TOPIX 0102:2nd Section 0104:Mothers 0106:JASDAQ Standard 0107:JASDAQ Growth  From the data for April 2022 0111:Prime 0112:Standard 0113:Growth
6	Index Classification	Index Classification	Prime	Corresponding English name for the index classification code noted in 5, above.
7	Sector Code	Sector Code	9050	Sector classification for the constituent
8	Sector	Sector	Services	Corresponding English name for the sector code in 7,
9	Size Code (TOPIX)	Size Code (TOPIX)	2	The size code 1 classification set if a constituent is a component of Size-based TOPIX sub-indices
10	Size (TOPIX)	Size (TOPIX)	Medium	Corresponding English name for the size code 1 in 9,
11	Size Code (New Index Series)	Size Code (New Index Series)	4	The size code 2 classification set if a constituent is a component of a new index series
12	Size (New Index Series)	Size (New Index Series)	TOPIX Mid400	Corresponding English name for the size code 2 in 11,
13	Close for Indexes Calculation	Close for Indexes Calculation	1988	Closing or other applicable price used for index calculation on the effective date
14	No. of Shares	No. of Shares	117830976.5	Number of shares for index calculation reflecting FFW and others on effective date (Units: Shares)
15	Dividend Amount	Dividend Amount	2	Forecast dividend per share relating to ex-dividend and final dividend adjustment per share (Units:Yen) If no dividend, then set NULL. Final dividend adjustment per share is calculated as follows. Dividend per share reported in the “Earnings Digest” –
16	Aggregate Dividend Amount	Aggregate Dividend Amount	235661953	Sum of (Product of the forecast dividend per share relating to the ex-dividend, and the number of constituent shares as of the business day prior to the ex-dividend date) and (total amount for final dividend adjustment) for the constituent.(Units: Yen) If no dividend, then set to NULL. Total amount for final dividend adjustment is calculated as follows. Total dividend amount reported in the “Earnings Digest” – Total estimated dividend amount
17	Change in No. of Shares	Change in No. of Shares	109772	Number of constituent shares in 14, above, less the number of constituent shares as of the date of data
18	CMV	CMV	234248000000	Closing market value on the effective date the data for the constituent is applied (Unit: Yen)
19	Trading Unit	Trading Unit	100	Indicates the trading unit of the constituent
20	FFW	FFW	0.5	Indicates the free-float weight applied to the index.
21	No. of Shares before FFW	No. of Shares before FFW	235661953	Indicates the number of constituent shares (100% type) (Units: Shares)
22	Calculation Base Price	Calculation Base Price	1976	The first price to be used in calculating the index when the price of the constituent has not changed (due to contract terms or special market conditions) in the time prior to the timing of the initial index calculation on the effective date of the data (Unit: Yen)

# Securities Identification Code Data

## 1. Available data period

Data available from 2018/11

## 2. Summary of Information Provided

As for the data (the reference date is May or November 1), data, in principle, will be available on fifth business day of May or November.  
As for the data (specify the month, reference date is every first day data), After confirming a deposit, we will send e-mail when the data is ready.  
Both detailed data and abridged data contains Standard Code Data.

### (1) Securities Identification Code Data (detailed)

CSV data including SICC Code(4+1 digit), ISIN Code(12 digit), issuer name, issue name, interest payment date(bond) and other data of approximately 80,000 stock, bonds, ETFs, REITs etc.

### (2) Securities Identification Code Data (abridged)

CSV data including SICC Code(4+1 digit), issuer name, issue name, and other data of approximately 6,500 stocks, bonds, ETFs, REITs etc.

**CAUTION: Securities Identification Code Data is Japanese only**

## 3. How to get

Download zip file (included Data CSV file and technical references)

## 4. Data Specifications

### (1) Securities Identification Code Data (detailed)

No.	Item	Header Name	Sample	Digit	Japanese Header Name	
1	SICC Code	SICC Code	70010100	9	現行コード	
2	ISIN Code	ISIN Code	JP2130001387	12	新証券コード	
3	ISSUE (Japanese)	ISSUE (Japanese)	東京都公募公債(20年)第1回	200	銘柄名称(漢字)	
4	ISSUE (English)	ISSUE (English)		200	銘柄名称(英文)	
5	ISSUE (Kana)	ISSUE (Kana)		200	銘柄名称(カナ)	
6	Issuer name (Japanese)	Issuer name (Japanese)	東京都	200	発行体名称(漢字)	
7	Issuer name (English)	Issuer name (English)	Tokyo Metropolitan	200	発行体名称(英文)	
8	Issuer name (Kana)	Issuer name (Kana)	トウキョウト	200	発行体名称(カナ)	
9	Fiscal year1	Fiscal year1		5	決算期1	
10	Fiscal year1(Special)	Fiscal year1(Special)		20	決算期1特殊	
11	Fiscal year2	Fiscal year2		5	決算期2	
12	Fiscal year2(Special)	Fiscal year2(Special)		20	決算期2特殊	
13	Shareholder registry administrator	Shareholder registry administrator		100	株主名簿管理人	
14	1Trading Unit	1Trading Unit		15	売買単位	
15	Sector	Sector		60	業種分類	
16	Series1	Series1		40	回	
18	Issue date	Issue date	2003/8/21	10	発行日	
19	Expiration date	Expiration date	2023/6/20	10	償還日	
20	Interest rate	Interest rate	1.54	12	利率	
21	Interest rate(others)	Interest rate(others)		1000	利率その他	
22	Interest payment date(1)	Interest payment date(1)	2018/2/25	5	利払期日1	
23	Interest payment date(2)	Interest payment date(2)	2018/8/25	5	利払期日2	
24	Interest payment date(3)	Interest payment date(3)		5	利払期日3	
25	Interest payment date(4)	Interest payment date(4)		5	利払期日4	
26	Initial interest payment date	Initial interest payment date		10	初期利払日	
27	TSE	TSE		20	東証	
28	TSE (Loan Trading)	TSE (Loan Trading)		10	東証貸借	
29	OSE	OSE		20	大証	
30	OSE (Loan Trading)	OSE (Loan Trading)		10	大証貸借	
31	NSE	NSE		20	名証	
32	NSE (Loan Trading)	NSE (Loan Trading)		10	名証貸借	
33	FSE	FSE		20	福証	
34	FSE (Loan Trading)	FSE (Loan Trading)		10	福証貸借	
35	SSE	SSE		20	札証	
36	SSE (Loan Trading)	SSE (Loan Trading)		10	札証貸借	
37	JSD	JSD		20	協会	
38	JSD (Loan Trading)	JSD (Loan Trading)		10	協会貸借	
39	Data valid start date	Data valid start date	2003/8/1	10	データ有効開始日	
40	Data valid end date	Data valid end date		10	データ有効終了日	
41	Status	Status		1	ステータス	
42	Country	Country	日本国	100	国名	
43	Foreign stock exchanges	Foreign stock exchanges		100	外国の主たる証券取引所等	
44	Remarks	Remarks		2000	備考	
45	Identification code by securities type	Identification code by securities type		31	2	証券種別コード

## (2) Securities Identification Code Data (abridged)

No.	Item	Header Name	Sample	Digit	Japanese Header Name
1	SICC Code	SICC Code	8697	4	銘柄固有名コード
2	ISIN Code	ISIN Code	18320	5	新証券発行体固有名コード
3	Issuer name (Japanese)	Issuer name (Japanese)	株式会社 日本取引所グループ	200	発行体名称(漢字)
4	Issuer name (English)	Issuer name (English)	Japan Exchange Group,Inc.	200	発行体名称(英文)
5	Issuer name (Kana)	Issuer name (Kana)	ニッポントリヒキジヨグループ	200	発行体名称(カナ)
6	Fiscal year1	Fiscal year1	2018/3/31	5	決算期1
7	Fiscal year1(Special)	Fiscal year1(Special)		20	決算期1特殊
8	Fiscal year2	Fiscal year2		5	決算期2
9	Fiscal year2(Special)	Fiscal year2(Special)		20	決算期2特殊
10	Shareholder registry administrator	Shareholder registry administrator	三菱UFJ信託銀行	100	株主名簿管理人
11	1Trading Unit	1Trading Unit	100	15	売買単位
12	Sector	Sector	その他金融業	60	業種分類
13	TSE	TSE	プライム市場	20	東証
14	TSE (Loan Trading)	TSE (Loan Trading)	貸借	10	東証貸借
15	OSE	OSE		20	大証
16	OSE (Loan Trading)	OSE (Loan Trading)		10	大証貸借
17	NSE	NSE		20	名証
18	NSE (Loan Trading)	NSE (Loan Trading)		10	名証貸借
19	FSE	FSE		20	福証
20	FSE (Loan Trading)	FSE (Loan Trading)		10	福証貸借
21	SSE	SSE		20	札証
22	SSE (Loan Trading)	SSE (Loan Trading)		10	札証貸借
23	JSD	JSD		20	協会
24	JSD (Loan Trading)	JSD (Loan Trading)		10	協会貸借
25	Data valid start date	Data valid start date	2004/2/26	10	データ有効開始日
26	Data valid end date	Data valid end date		10	データ有効終了日
27	Status	Status		1	ステータス
28	Country	Country	日本国	100	国名
29	Foreign stock exchanges	Foreign stock exchanges		100	外国の主たる証券取引所等
30	Remarks	Remarks		2000	備考

## (3) Standard Code Data

No.	Item	Header Name	Sample	Digit	Japanese Header Name
1	Standard Code	Standard Code	11004	4	標準コード
2	Name of company	Name of company	アーク証券	5	社名
3	Name of company (Kana)	Name of company (Kana)	アークショウケン	200	社名(カナ)
4	TSE	TSE		1	東証
5	OSE	OSE	D	200	OSE
6	NSE	NSE		1	名証
7	FSE	FSE		20	福証
8	SSE	SSE		5	札証
9	JSD	JSD		20	協会
10	District Offices of JSD	District Offices of JSD		100	地区協会
11	Data valid start date	Data valid start date	2001/10/10	10	データ有効開始日
12	Data valid end date	Data valid end date		10	データ有効終了日

## (1) List of O/H/L/C covered indices

Index name	Index code	Available from
JPX-Nikkei Index 400	8507	(O/H/L/C) 2014/1/6 (Closing Price) 2006/8/31
JPX-Nikkei Mid and Small Cap Index	8508	2017/3/13
TOPIX	0000	(O/H/L/C) 1988/4/2 (Closing Price) 1949/5/16
TOPIX Core30	0028	(O/H/L/C) 1998/4/2 (Closing Price) 1989/1/4
TOPIX Large70	0029	(O/H/L/C) 1998/4/2 (Closing Price) 1989/1/4
TOPIX 100	002A	(O/H/L/C) 1998/4/2 (Closing Price) 1989/1/4
TOPIX Mid400	002B	(O/H/L/C) 1998/4/2 (Closing Price) 1989/1/4
TOPIX 500	002C	(O/H/L/C) 1998/4/2 (Closing Price) 1989/1/4
TOPIX Small	002D	(O/H/L/C) 1998/4/16 (Closing Price) 1989/1/4
TOPIX 1000	002E	(O/H/L/C) 2003/9/16 (Closing Price) 1998/9/11
TOPIX Small500	002F	2018/10/9
1st Section Large	0002	(O/H/L/C) 1997/8/4 (Closing Price) 1968/1/4
1st Section Mid	0003	(O/H/L/C) 1997/8/4 (Closing Price) 1968/1/4
1st Section Small	0004	(O/H/L/C) 1997/8/4 (Closing Price) 1968/1/4
Fishery, Agriculture & Forestry	0040	(O/H/L/C) 1997/8/4 (Closing Price) 1968/1/4
Mining	0041	(O/H/L/C) 1997/8/4 (Closing Price) 1968/1/4
Construction	0042	(O/H/L/C) 1997/8/4 (Closing Price) 1968/1/4
Foods	0043	(O/H/L/C) 1997/8/4 (Closing Price) 1968/1/4
Textiles & Apparels	0044	(O/H/L/C) 1997/8/4 (Closing Price) 1968/1/4
Pulp & Paper	0045	(O/H/L/C) 1997/8/4 (Closing Price) 1968/1/4
Chemicals	0046	(O/H/L/C) 1997/12/1 (Closing Price) 1983/1/4
Pharmaceutical	0047	(O/H/L/C) 1997/12/1 (Closing Price) 1983/1/4
Oil & Coal Products	0048	(O/H/L/C) 1997/8/4 (Closing Price) 1968/1/4
Rubber Products	0049	(O/H/L/C) 1997/8/4 (Closing Price) 1968/1/4
Glass & Ceramics Products	004A	(O/H/L/C) 1997/8/4 (Closing Price) 1968/1/4
Iron & Steel	004B	(O/H/L/C) 1997/8/4 (Closing Price) 1968/1/4
Nonferrous Metals	004C	(O/H/L/C) 1997/8/4 (Closing Price) 1968/1/4
Metal Products	004D	(O/H/L/C) 1997/8/4 (Closing Price) 1968/1/4
Machinery	004E	(O/H/L/C) 1997/8/4 (Closing Price) 1968/1/4
Electronic Appliances	004F	(O/H/L/C) 1997/8/4 (Closing Price) 1968/1/4
Transportation Equipment	0050	(O/H/L/C) 1997/8/4 (Closing Price) 1968/1/4
Precision Instruments	0051	(O/H/L/C) 1997/8/4 (Closing Price) 1968/1/4
Other Products	0052	(O/H/L/C) 1997/8/4 (Closing Price) 1968/1/4
Electric Power & Gas	0053	(O/H/L/C) 1997/8/4 (Closing Price) 1968/1/4
Land Transportation	0054	(O/H/L/C) 1997/8/4 (Closing Price) 1968/1/4
Marine Transportation	0055	(O/H/L/C) 1997/8/4 (Closing Price) 1968/1/4
Air Transportation	0056	(O/H/L/C) 1997/8/4 (Closing Price) 1970/2/2
Warehousing and Harbor Transportation Service	0057	(O/H/L/C) 1997/8/4 (Closing Price) 1968/1/4
Information & Communication	0058	(O/H/L/C) 1997/8/4 (Closing Price) 1968/1/4
Wholesale Trade	0059	(O/H/L/C) 1997/12/1 (Closing Price) 1983/1/4
Retail Trade	005A	(O/H/L/C) 1997/12/1 (Closing Price) 1983/1/4
Banks	005B	(O/H/L/C) 1997/12/1 (Closing Price) 1983/1/4
Securities & Commodity Futures	005C	(O/H/L/C) 1997/12/1 (Closing Price) 1983/1/4
Insurance	005D	(O/H/L/C) 1997/12/1 (Closing Price) 1983/1/4
Other Financing Business	005E	(O/H/L/C) 1997/12/1 (Closing Price) 1983/1/4
Real Estate	005F	(O/H/L/C) 1997/8/4 (Closing Price) 1968/1/4
Services	0060	(O/H/L/C) 1997/8/4 (Closing Price) 1968/1/4



TOPIX-17 FOODS	0080	(O/H/L/C) 2007/12/10 (Closing Price)1993/7/5
TOPIX-17 ENERGY RESOURCES	0081	(O/H/L/C) 2007/12/10 (Closing Price)1993/7/5
TOPIX-17 CONSTRUCTION & MATERIALS	0082	(O/H/L/C) 2007/12/10 (Closing Price)1993/7/5
TOPIX-17 RAW MATERIALS & CHEMICALS	0083	(O/H/L/C) 2007/12/10 (Closing Price)1993/7/5
TOPIX-17 PHARMACEUTICAL	0084	(O/H/L/C) 2007/12/10 (Closing Price)1993/7/5
TOPIX-17 AUTOMOBILES & TRANSPORTATION EQUIPMENT	0085	(O/H/L/C) 2007/12/10 (Closing Price)1993/7/5
TOPIX-17 STEEL & NONFERROUS METALS	0086	(O/H/L/C) 2007/12/10 (Closing Price)1993/7/5
TOPIX-17 MACHINERY	0087	(O/H/L/C) 2007/12/10 (Closing Price)1993/7/5
TOPIX-17 ELECTRIC APPLIANCES & PRECISION INSTRUMENTS	0088	(O/H/L/C) 2007/12/10 (Closing Price)1993/7/5
TOPIX-17 IT & SERVICES, OTHERS	0089	(O/H/L/C) 2007/12/10 (Closing Price)1993/7/5
TOPIX-17 ELECTRIC POWER & GAS	008A	(O/H/L/C) 2007/12/10 (Closing Price)1993/7/5
TOPIX-17 TRANSPORTATION & LOGISTICS	008B	(O/H/L/C) 2007/12/10 (Closing Price)1993/7/5
TOPIX-17 COMMERCIAL & WHOLESALE TRADE	008C	(O/H/L/C) 2007/12/10 (Closing Price)1993/7/5
TOPIX-17 RETAIL TRADE	008D	(O/H/L/C) 2007/12/10 (Closing Price)1993/7/5
TOPIX-17 BANKS	008E	(O/H/L/C) 2007/12/10 (Closing Price)1993/7/5
TOPIX-17 FINANCIALS (EX BANKS)	008F	(O/H/L/C) 2007/12/10 (Closing Price)1993/7/5
TOPIX-17 REAL ESTATE	0090	(O/H/L/C) 2007/12/10 (Closing Price)1993/7/5
TOPIX Value	8100	(O/H/L/C) 2007/12/10 (Closing Price)1999/11/1
TOPIX Growth	8200	(O/H/L/C) 2009/2/9 (Closing Price)1999/11/1
TOPIX 500 Value	812C	(O/H/L/C) 2009/2/9 (Closing Price)1999/11/1
TOPIX 500 Growth	822C	(O/H/L/C) 2009/2/9 (Closing Price)1999/11/1
TOPIX Small Value	812D	(O/H/L/C) 2009/2/9 (Closing Price)1999/11/1
TOPIX Small Growth	822D	(O/H/L/C) 2009/2/9 (Closing Price)1999/11/1
Dividend Focus 100	8500	(O/H/L/C) 2010/3/8 (Closing Price)2007/1/31
TOPIX Ex-Financials	8506	(O/H/L/C) 2013/9/2 (Closing Price)1993/7/5
TOPIX Leveraged (2x) Index	1000	(O/H/L/C) 2012/3/1 (Closing Price)2007/1/4
TOPIX Inverse (-1x) Index	1001	(O/H/L/C) 2012/3/1 (Closing Price)2007/1/4
TOPIX Double Inverse (-2x) Index	1002	(O/H/L/C) 2012/3/1 (Closing Price)2007/1/4
Second Section Stock Price Index	0001	(O/H/L/C) 1997/8/4-2022/3/31 (Closing Price)1961/10/2
Tokyo Stock Exchange Growth Market 250 Index*	0070	(O/H/L/C) 2003/9/16 (Closing Price)2001/4/2
Tokyo Stock Exchange Mothers Core Index	8505	2011/10/11-2023/3/31
JASDAQ INDEX	0091	2013/7/16-2022/3/31
JASDAQ INDEX (Standard)	0092	2013/7/16-2022/3/31
JASDAQ INDEX (Growth)	0093	2013/7/16-2022/3/31
J-Stock Index	0094	2013/7/16-2022/3/31
JASDAQ-TOP20	1A00	2013/7/16-2023/3/31
REIT	0075	(O/H/L/C) 2003/9/16 (Closing Price)2003/4/1
Tokyo Stock Exchange REIT Office Index	8501	(O/H/L/C) 2010/6/21 (Closing Price)2010/3/8
Tokyo Stock Exchange REIT Residential Index	8502	(O/H/L/C) 2010/6/21 (Closing Price)2010/3/8
Tokyo Stock Exchange REIT Retail & Logistics, Others Index	8503	(O/H/L/C) 2010/6/21 (Closing Price)2010/3/8
Tokyo Stock Exchange REIT Inverse (-1x) Index	1006	2023/7/3
Tokyo Stock Exchange REIT Leveraged (2x) Index	1007	2023/7/3
Tokyo Stock Exchange REIT Double Inverse (-2x) Index	1008	2023/7/3
Tokyo Stock Exchange Infrastructure Funds Index	0099	2020/4/27
TOPIX Composite	0076	2009/2/9-2022/3/31
Tokyo Stock Exchange Second Section Composite Index	0078	2009/2/9-2022/3/31
Tokyo Stock Exchange Mothers Composite Index	0079	2009/2/9-2022/3/31
Tokyo Stock Exchange Growth Market Core Index	8801	2022/4/4
Tokyo Stock Exchange Standard Market TOP20 Index	8802	2022/4/4
Tokyo Stock Exchange Prime Market Index	0500	2022/6/27
JPX Prime 150 Index	0503	2023/7/3
Tokyo Stock Exchange Standard Market Index	0501	2022/6/27
Tokyo Stock Exchange Growth Market Index	0502	2022/6/27

\*The name of the index was changed from "Tokyo Stock Exchange Mothers Index" to "Tokyo Stock Exchange Growth Market 250 Index" on November 6, 2023.

## (2) List of tick data covered indices

Index name	Index code	Available from
JPX-Nikkei Index 400	8507	2014/1/6
JPX-Nikkei Mid and Small Cap Index	8508	2017/3/13
TOPIX	0000	1997/8/4
TOPIX Core30	0028	1998/4/2
TOPIX Large70	0029	1998/4/2
TOPIX 100	002A	1998/4/2
TOPIX Mid400	002B	1998/4/2
TOPIX 500	002C	1998/4/2
TOPIX Small	002D	1998/4/16
TOPIX 1000	002E	2003/9/16
TOPIX Small500	002F	2018/10/9
1st Section Large	0002	1997/8/4
1st Section Mid	0003	1997/8/4
1st Section Small	0004	1997/8/4
Fishery, Agriculture & Forestry	0040	1997/8/4
Mining	0041	1997/8/4
Construction	0042	1997/8/4
Foods	0043	1997/8/4
Textiles & Apparels	0044	1997/8/4
Pulp & Paper	0045	1997/8/4
Chemicals	0046	1997/8/4
Pharmaceutical	0047	1997/8/4
Oil & Coal Products	0048	1997/8/4
Rubber Products	0049	1997/8/4
Glass & Ceramics Products	004A	1997/8/4
Iron & Steel	004B	1997/8/4
Nonferrous Metals	004C	1997/8/4
Metal Products	004D	1997/8/4
Machinery	004E	1997/8/4
Electronic Appliances	004F	1997/8/4
Transportation Equipment	0050	1997/8/4
Precision Instruments	0051	1997/8/4
Other Products	0052	1997/8/4
Electric Power & Gas	0053	1997/8/4
Land Transportation	0054	1997/8/4
Marine Transportation	0055	1997/8/4
Air Transportation	0056	1997/8/4
Warehousing & Harbor Transportation Service	0057	1997/8/4
Information & Communication	0058	1997/8/4
Wholesale Trade	0059	1997/8/4
Retail Trade	005A	1997/8/4
Banks	005B	1997/8/4
Securities & Commodity Futures	005C	1997/8/4
Insurance	005D	1997/8/4
Other Financing Business	005E	1997/8/4
Real Estate	005F	1997/8/4
Services	0060	1997/8/4
TOPIX-17 FOODS	0080	2007/12/10
TOPIX-17 ENERGY RESOURCES	0081	2007/12/10
TOPIX-17 CONSTRUCTION & MATERIALS	0082	2007/12/10
TOPIX-17 RAW MATERIALS & CHEMICALS	0083	2007/12/10
TOPIX-17 PHARMACEUTICAL	0084	2007/12/10
TOPIX-17 AUTOMOBILES & TRANSPORTATION EQUIPMENT	0085	2007/12/10
TOPIX-17 STEEL & NONFERROUS METALS	0086	2007/12/10
TOPIX-17 MACHINERY	0087	2007/12/10
TOPIX-17 ELECTRIC APPLIANCES & PRECISION INSTRUMENTS	0088	2007/12/10
TOPIX-17 IT & SERVICES, OTHERS	0089	2007/12/10
TOPIX-17 ELECTRIC POWER & GAS	008A	2007/12/10
TOPIX-17 TRANSPORTATION & LOGISTICS	008B	2007/12/10
TOPIX-17 COMMERCIAL & WHOLESALE TRADE	008C	2007/12/10
TOPIX-17 RETAIL TRADE	008D	2007/12/10
TOPIX-17 BANKS	008E	2007/12/10
TOPIX-17 FINANCIALS (EX BANKS)	008F	2007/12/10
TOPIX-17 REAL ESTATE	0090	2007/12/10
TOPIX Value	8100	2009/2/9
TOPIX Growth	8200	2009/2/9
TOPIX 500 Value	812C	2009/2/9
TOPIX 500 Growth	822C	2009/2/9
TOPIX Small Value	812D	2009/2/9
TOPIX Small Growth	822D	2009/2/9
Dividend Focus 100	8500	2010/3/8
TOPIX Ex-Financials	8506	2013/9/2
TOPIX Leveraged (2x) Index	1000	2012/3/1
TOPIX Inverse (-1x) Index	1001	2012/3/1
TOPIX Double Inverse (-2x) Index	1002	2012/3/1
Second Section Stock Price Index	0001	1997/8/4-2022/3/31
Tokyo Stock Exchange Growth Market 250 Index*	0070	2003/9/16
Tokyo Stock Exchange Mothers Core Index	8505	2011/10/11-2023/3/31
JASDAQ INDEX	0091	2013/7/16-2022/3/31
JASDAQ INDEX (Standard)	0092	2013/7/16-2022/3/31
JASDAQ INDEX (Growth)	0093	2013/7/16-2022/3/31
J-Stock Index	0094	2013/7/16-2022/3/31
JASDAQ-TOP20	1A00	2013/7/16-2023/3/31
REIT	0075	2003/9/16
Tokyo Stock Exchange REIT Office Index	8501	2010/6/21
Tokyo Stock Exchange REIT Residential Index	8502	2010/6/21
Tokyo Stock Exchange REIT Retail & Logistics, Others Index	8503	2010/6/21
Tokyo Stock Exchange REIT Inverse (-1x) Index	1006	2023/7/3
Tokyo Stock Exchange REIT Leveraged (2x) Index	1007	2023/7/3
Tokyo Stock Exchange REIT Double Inverse (-2x) Index	1008	2023/7/3
Tokyo Stock Exchange Infrastructure Funds Index	0099	2020/4/27
TOPIX Composite	0076	2009/2/9-2022/3/31
Tokyo Stock Exchange Second Section Composite Index	0078	2009/2/9-2022/3/31
Tokyo Stock Exchange Mothers Composite Index	0079	2009/2/9-2022/3/31
Tokyo Stock Exchange Growth Market Core Index	8801	2022/4/4
Tokyo Stock Exchange Standard Market TOP20 Index	8802	2022/4/4
Tokyo Stock Exchange Prime Market Index	0500	2022/6/27
JPX Prime 150 Index	0503	2023/7/3
Tokyo Stock Exchange Standard Market Index	0501	2022/6/27
Tokyo Stock Exchange Growth Market Index	0502	2022/6/27

\*The name of the index was changed from "Tokyo Stock Exchange Mothers Index" to "Tokyo Stock Exchange Growth Market 250 Index" on November 6, 2023.

Appendix2 List of Indices provided by closing price only

Index name	Index code	Available from
JPX-Nikkei 400 Total Return Index Closing Price	B507	2006/8/31-
JPX-Nikkei 400 Net Total Return Index Closing Price	6096	2006/8/31-
TOPIX (Total Return) Closing Price	6000	1989/1/4-
TOPIX Net Total Return Index Closing Price	6095	1989/1/4-
TOPIX Core30 (Total Return) Closing Price	6028	1993/7/5-
TOPIX Large70 (Total Return) Closing Price	6029	1993/7/5-
TOPIX 100 (Total Return) Closing Price	602A	1993/7/5-
TOPIX Mid400 (Total Return) Closing Price	602E	1993/7/5-
TOPIX 500 (Total Return) Closing Price	602C	1993/7/5-
TOPIX 1000 (Total Return) Closing Price	602D	1993/7/5-
TOPIX Small (Total Return) Closing Price	602E	1989/9/11-
TOPIX Small500 Closing Price	002F	2013/7/16
1st Section Large (Total Return) Closing Price	6002	1993/7/5-
1st Section Mid (Total Return) Closing Price	6003	1993/7/5-
1st Section Small (Total Return) Closing Price	6004	1993/7/5-
Fishery, Agriculture & Forestry (Total Return) Closing Price	6040	1993/7/5-
Mining (Total Return) Closing Price	6041	1993/7/5-
Construction (Total Return) Closing Price	6042	1993/7/5-
Foods (Total Return) Closing Price	6043	1993/7/5-
Textiles & Apparels (Total Return) Closing Price	6044	1993/7/5-
Pulp & Paper (Total Return) Closing Price	6045	1993/7/5-
Chemicals (Total Return) Closing Price	6046	1993/7/5-
Pharmaceutical (Total Return) Closing Price	6047	1993/7/5-
Oil & Coal Products (Total Return) Closing Price	6048	1993/7/5-
Rubber Products (Total Return) Closing Price	6049	1993/7/5-
Glass & Ceramics Products (Total Return) Closing Price	604A	1993/7/5-
Iron & Steel (Total Return) Closing Price	604B	1993/7/5-
Nonferrous Metals (Total Return) Closing Price	604C	1993/7/5-
Metal Products (Total Return) Closing Price	604D	1993/7/5-
Machinery (Total Return) Closing Price	604E	1993/7/5-
Electronic Appliances (Total Return) Closing Price	604F	1993/7/5-
Transportation Equipment (Total Return) Closing Price	6050	1993/7/5-
Precision Instruments (Total Return) Closing Price	6051	1993/7/5-
Other Products (Total Return) Closing Price	6052	1993/7/5-
Electric Power & Gas (Total Return) Closing Price	6053	1993/7/5-
Land Transportation (Total Return) Closing Price	6054	1993/7/5-
Marine Transportation (Total Return) Closing Price	6055	1993/7/5-
Air Transportation (Total Return) Closing Price	6056	1993/7/5-
Warehousing & Harbor Transportation Service (Total Return) Closing Price	6057	1993/7/5-
Information & Communication (Total Return) Closing Price	6058	1993/7/5-
Wholesale Trade (Total Return) Closing Price	6059	1993/7/5-
Retail Trade (Total Return) Closing Price	605A	1993/7/5-
Banks (Total Return) Closing Price	605B	1993/7/5-
Securities & Commodity Futures (Total Return) Closing Price	605C	1993/7/5-
Insurance (Total Return) Closing Price	605D	1993/7/5-
Other Financing Business (Total Return) Closing Price	605E	1993/7/5-
Real Estate (Total Return) Closing Price	605F	1993/7/5-
Services (Total Return) Closing Price	6060	1993/7/5-
TOPIX-17 FOODS(Total Return) Closing Price	6080	1993/7/5-
TOPIX-17 ENERGY RESOURCES(Total Return) Closing Price	6081	1993/7/5-
TOPIX-17 CONSTRUCTION & MATERIALS(Total Return) Closing Price	6082	1993/7/5-
TOPIX-17 RAW MATERIALS & CHEMICALS(Total Return) Closing Price	6083	1993/7/5-
TOPIX-17 PHARMACEUTICAL(Total Return) Closing Price	6084	1993/7/5-
TOPIX-17 AUTOMOBILES & TRANSPORTATION EQUIPMENT(Total Return) Closing Price	6085	1993/7/5-
TOPIX-17 STEEL & NONFERROUS METALS(Total Return) Closing Price	6086	1993/7/5-
TOPIX-17 MACHINERY(Total Return) Closing Price	6087	1993/7/5-
TOPIX-17 ELECTRIC APPLIANCES & PRECISION INSTRUMENTS(Total Return) Closing Price	6088	1993/7/5-
TOPIX-17 IT & SERVICES, OTHERS(Total Return) Closing Price	6089	1993/7/5-
TOPIX-17 ELECTRIC POWER & GAS(Total Return) Closing Price	608A	1993/7/5-
TOPIX-17 TRANSPORTATION & LOGISTICS(Total Return) Closing Price	608B	1993/7/5-
TOPIX-17 COMMERCIAL & WHOLESALE TRADE(Total Return) Closing Price	608C	1993/7/5-
TOPIX-17 RETAIL TRADE(Total Return) Closing Price	608D	1993/7/5-
TOPIX-17 BANKS(Total Return) Closing Price	608E	1993/7/5-
TOPIX-17 FINANCIALS (EX BANKS)(Total Return) Closing Price	608F	1993/7/5-
TOPIX-17 REAL ESTATE(Total Return) Closing Price	6090	1993/7/5-
TOPIX Value(Total Return) Closing Price	B100	1999/11/1-
TOPIX 500 Value(Total Return) Closing Price	B200	1999/11/1-
TOPIX Small Value(Total Return) Closing Price	B12C	1999/11/1-
TOPIX Growth(Total Return) Closing Price	B22C	1999/11/1-
TOPIX 500 Growth(Total Return) Closing Price	B12D	1999/11/1-
TOPIX Small Growth(Total Return) Closing Price	B22D	1999/11/1-
Dividend Focus 100 (Total Return) Closing Price	B500	2001/1/31-
TOPIX Ex-Financials (Total Return) Closing Price	B402	1993/7/5-
Second Section Stock Price Index (Total Return) Closing Price	6001	1993/7/5-2022/3/31
Tokyo Stock Exchange Growth Market 250 Index* (Total Return) Closing Price	6070	2001/4/2-
Tokyo Stock Exchange Mothers Core Index (Total Return) Closing Price	B505	2011/10/11-2023/3/31
REIT Index (Total Return) Closing Price	6075	2003/4/1-
Tokyo Stock Exchange REIT Office Index(Total Return) Closing Price	B501	2010/3/8-
Tokyo Stock Exchange REIT Residential Index(Total Return) Closing Price	B502	2010/3/8-
Tokyo Stock Exchange REIT Retail & Logistics, Others Index(Total Return) Closing Price	B503	2010/3/8-
Tokyo Stock Exchange Infrastructure Funds Index Closing Price	0099	2020/3/27-4/24
Total Return TOPIX Composite Closing Price	6076	2009/2/9-2022/3/31
Total Return Tokyo Stock Exchange Second Section Composite Index Closing Price	6078	2009/2/9-2022/3/31
Total Return Tokyo Stock Exchange Mothers Composite Index Closing Price	6079	2009/2/9-2022/3/31
Tokyo Stock Exchange Prime Market Total Return Index Closing Price	7000	2022/4/4
JPX Prime 150 Index	6053	2023/7/3-
Tokyo Stock Exchange Standard Market Total Return Index Closing Price	7001	2022/4/4
Tokyo Stock Exchange Growth Market Total Return Index Closing Price	7002	2022/4/4
Tokyo Stock Exchange Prime Market Composite Total Return Index Closing Price	7003	2022/4/4
Ex-Tokyo Stock Exchange First Section Total Return Index Closing Price	7004	2022/4/4
Tokyo Stock Exchange Growth Market Core Total Return Index	B801	2022/4/4
Tokyo Stock Exchange Standard Market TOP20 Total Return Index	B802	2022/4/4
Tokyo Stock Exchange Prime Market Index Closing Price	5000	2022/4/4-2022/6/30
Tokyo Stock Exchange Standard Market Index Closing Price	5001	2022/4/4-2022/6/30
Tokyo Stock Exchange Growth Market Index Closing Price	5002	2022/4/4-2022/6/30
Tokyo Stock Exchange Prime Market Composite Index Closing Price	5003	2022/4/4
Ex-Tokyo Stock Exchange First Section Index Closing Price	5004	2022/4/4
JPX-Nikkei 400 Leveraged (2x) Index Closing Price	1003	2015/8/3
JPX-Nikkei 400 Inverse (-1x) Index Closing Price	1004	2015/8/3
JPX-Nikkei 400 Double Inverse (-2x) Index Closing Price	1005	2015/8/3

\*The name of the index was changed from "Tokyo Stock Exchange Mothers Index" to "Tokyo Stock Exchange Growth Market 250 Index" on November 6, 2023.

For further details of “(1)Identification Code Specifications for Futures and Options Transactions”, please refer to “Identification Code Specifications for Futures and Options Transactions” of Securities Identification Code Committee.

For further details of “(2)Identification Code Specifications for Equity Options Transaction”, please refer to “Identification Code Specifications for Equity Options Transaction” of Securities Identification Code Committee.

– Securities Identification Code Committee <https://www.jpx.co.jp/english/sicc/index.html>

#### (1)Identification Code Specifications for Futures and Options Transactions

**[1st digit]** “1” is set to indicate special transactions (futures/options trading)

**[2nd digit]** Futures/Options (Put/Call, spot/futures) Classification

Futures/options classification and, in the case of options, put/call and spot/futures distinction shall be as follows.

Classification	Code
Put options transaction (futures)	1 and 5
Call options transaction (futures)	2 and 7
Put options transaction (spot)	3 and 8
Call options transaction (spot)	4 and 9
Futures transaction	6

(Note) Codes “5”, “7”, “8”, and “9” will be used as reserved codes if an issue (exercise price) is set additionally in index options trading, government bond futures options trading, etc. and the same code for “Exercise price, etc.” has already been set within the same contract month.

**[3rd to 5th digit]** Contract month

the 3rd digit ··· the number changes every 10 years based on the year 1985 as “0”.

the 4th and 5th digit ··· contract month.

(Note) For further information, please refer to “Identification Code Specifications for Futures and Options Transactions” of Securities Identification Code Committee (<https://www.jpx.co.jp/english/sicc/index.html>)

For specific contract month code about Weekly Contracts (Weekly Options), “40” will be used for the weekly contract whose last trading day is the day preceding the first Friday of each year (in the 1st week of January), and the number will increase by 1 for subsequent new weekly contracts (excluding existing monthly contracts).

(e.g.) Month code

1W Jan.	40	
2W Jan.	–	(Existing monthly contract will be set.)
3W Jan.	41	

For Nikkei 225 mini Options trading, the contract month whose last trading day is the business day before the first Friday of each year (the first week of January) is set to “01”. Henceforth, each contract month whose last trading day is the business day before the Friday of the following week will increase the number by 1. However, when a new issue (exercise price) is set and within the same contract month, the code representing “Put/call, spot/futures distinction” and the code representing “exercise price” are the same, priority will be given to the lowest number from “54” to “99”, and it will be used each time. In this case, “3” and “4” will be used for codes representing “Put/call, spot/futures distinction.”

(e.g.) Month code

1W Jan.	01
2W Jan.	02
3W Jan.	03

**[6th and 7th digit]** Exercise price, etc.

The exercise price will be coded as a 2-digit number.

For further information, please refer to “Identification Code Specifications for Futures and Options Transactions” of Securities Identification Code Committee ([https://www.jpx.co.jp/sicc/sicc\\_en/index\\_en.html](https://www.jpx.co.jp/sicc/sicc_en/index_en.html))

**[8th and 9th digit]** Segment for the underlying Index

Products	Index Segment	Products previously traded on OSE/TSE*
TOPIX Futures	05	Previously traded on TSE
TOPIX Optins	05	Previously traded on TSE
mini-TOPIX Futures	06	Previously traded on TSE
TSE Growth Market 250 Index Futures*	11	After market integration
Nikkei 225 VI Futures	15	Previously traded on OSE
Nikkei 225 Dividend Index Futures	17	Previously traded on TSE
Nikkei 225 Futures (Large Contracts)	18	Previously traded on OSE
Nikkei 225 Options	18	Previously traded on OSE
Nikkei 225 Weekly Options	20	After market integration
Nikkei 225 mini	19	Previously traded on OSE
JPX-Nikkei Index 400 Futures	22	After market integration
JPX-Nikkei Index 400 Options	22	After market integration
Nikkei 225 micro Futures	23	After market integration
Nikkei 225 mini Options	26	After market integration
TOPIX Banks Index Futures	32	Previously traded on TSE
TOPIX Core30 Futures	63	Previously traded on TSE
TSE REIT Index Futures	69	Previously traded on TSE
DJIA Futures	73	Previously traded on OSE
RN Prime Index Futures	76	Previously traded on OSE
TAIEX Futures	78	After market integration
FTSE China 50 Index Futures	79	After market integration
10-year JGB Futures	01	Previously traded on TSE
Options on JGB Futures	01	Previously traded on TSE
20-year JGB Futures	02	Previously traded on TSE
5-year JGB Futures	04	Previously traded on TSE
mini-10 year JGB Futures	07	Previously traded on TSE
3-Month TONA Futures	91	After market integration

Gold Standard	A0	—
Gold mini	A1	—
Gold Rolling-Spot Futures	A2	—
Silver	A3	—
Platinum Standard	A4	—
Platinum mini	A5	—
Palladium	A6	—
Crude Oil	A7	—
Gasoline	A8	—
Kerosene	A9	—
Gas Oil	AA	—
Chukyo Gasoline	AB	—
Chukyo Kerosene	AC	—
Corn	AG	—
Soybean	AH	—
Azuki (Red bean)	AJ	—
Rubber (RSS3)	AK	—
Platinum Rolling-Spot Futures	AL	—
Rubber (TSR20)	AM	—
CME Group Petroleum Index	AZ	—
LNG (Platts JKM)	B0	—
West Area Base Load	B1	—
West Area Peak Load	B2	—
East Area Base Load	B3	—
East Area Peak Load	B4	—

\*Products previously traded on OSE means those started trading on Osaka Securities Exchange before market integration (March 24, 2014)

\*Products previously traded on TSE means those started trading on Tokyo Stock Exchange before market integration (March 24, 2014)

\*The name of the product was changed from "TSE Mothers Index Futures" to "TSE Growth Market 250 Index Futures" on November 6, 2023.

## (2) Identification Code Specifications for Equity Options Transaction

### 【1st digit】 Put/call

Options "put"..."2"

Options "call"..."3"

### 【2nd and 3rd digit】 Contract month

The contract month will be indicated and coded in a 4-year cycle as follows.

		Jan	Feb	Mar	Apr	May	Jun	Jul	Aug	Sep	Oct	Nov	Dec
1st year	Normal	01	02	03	04	05	06	07	08	09	10	11	12
	Reserved	51	52	53	54	55	56	57	58	59	60	61	62
2nd year	Normal	13	14	15	16	17	18	19	20	21	22	23	24
	Reserved	63	64	65	66	67	68	69	70	71	72	73	74
3rd year	Normal	25	26	27	28	29	30	31	32	33	34	35	36
	Reserved	75	76	77	78	79	80	81	82	83	84	85	86
4th year	Normal	37	38	39	40	41	42	43	44	45	46	47	48
	Reserved	87	88	89	90	91	92	93	94	95	96	97	98

Reserved codes will be used in cases where the number of "Exercise price" in a contract month exceeds "98".

### 【4th and 5th digit】 Exercise price

Code numbers "01" to "98" will be allocated in sequence according to the order in which exercise prices are set, based on each exchange that lists the stock.

For further information, please refer "Identification Code Specifications for Equity Options Transaction" of Securities Identification Code Committee ([https://www.jpx.co.jp/sicc/sicc\\_en/index\\_en.html](https://www.jpx.co.jp/sicc/sicc_en/index_en.html))

### 【6th to 9th digit】 Underlying stock

The underlying stock for the options transaction will be indicated using the specific name code (4-digit stock issue code) of the stock. The same shall apply to cases where the underlying issue is a domestic investment securities, preferred equity investment securities, investment trust beneficiary certificates, etc..

#### Appendix4 Sector code

Sector code	Sector classification
0050	Fishery, Agriculture & Forestry
1050	Mining
2050	Construction
3050	Foods
3100	Textiles & Apparels
3150	Pulp & Paper
3200	Chemicals
3250	Pharmaceutical
3300	Oil & Coal Products
3350	Rubber Products
3400	Glass & Ceramics Products
3450	Iron & Steel
3500	Nonferrous Metals
3550	Metal Products
3600	Machinery
3650	Electric Appliances
3700	Transportation Equipment
3750	Precision Instruments
3800	Other Products
4050	Electric Power & Gas
5050	Land Transportation
5100	Marine Transportation
5150	Air Transportation
5200	Warehousing & Harbor Transportation Services
5250	Information & Communication
6050	Wholesale Trade
6100	Retail Trade
7050	Banks
7100	Securities & Commodity Futures
7150	Insurance
7200	Other Financing Business
8050	Real Estate
9050	Services

Appendix 5-1 Remarks for the historical data

#	Date	Product Name	Contents
1	2012/2/2	TSE Stock Daily OHLC, TSE CB Daily OHLC	Due to system issues, information for some issues is not traded for the morning auction session. Please see "Issue list (20120202)_Standard" for a list of the issues affected.
2	2012/2/2	TSE Stock Tick Prices, TSE CB Tick Prices	Due to system issues, information for some issues is not available for the morning auction session. Please see "Issue list (20120202)_Full" for a list of the issues affected.
3	2015/9/24 -2015/10/9	TSE Stock Tick Prices, TSE CB Tick Prices	If Special Quote or Sequential Trade Quote(Continuous Execution Quote) is being posted and then Sequential Trade takes place by a quote reverse beginning with using Itayose method, either Buying-Up or Selling-Down quote flag will be set to the top priority price which causes the quote reverse. In the situation where Ask Special Quote is posted, for example, if the outnumbered bid orders (not the top priority quote) are made and executed by the posted price and then the Buying-up continues, Buying-up Quote Flag will be set to the top priority price of fully executed bid orders.
4	2017/3/29	JASDAQ-TOP20 O/H/L/C Price, JASDAQ-TOP20 Tick Data	Prices are incorrect all day. The correct Closing price and Day-on-day comparison (Net change) are as follows.  Closing price: 4036.39 Day-on-day comparison (Net change): 94.49
5	2017/3/30	JASDAQ-TOP20 O/H/L/C Price, JASDAQ-TOP20 Tick Data	Prices are incorrect all day. The correct Closing price and Day-on-day comparison (Net change) are as follows.  Closing price: 4024.94 Day-on-day comparison (Net change): -11.45
6	2018/10/30	TSE Stock Daily OHLC, TSE Stock Tick Prices	The content of the information differs as follows. Issue name : Excite Japan Co.,Ltd. (Code:3754) Item: Ex-right flag Correct Setting condition : Space
7	2020/8/31	Tokyo Stock Exchange Infrastructure Funds Index O/H/L/C Price, Tokyo Stock Exchange Infrastructure Funds Index Tick Data	Prices are incorrect all day. The correct Closing price and Day-on-day comparison (Net change) are as follows.  Closing price: 1079.84 Day-on-day comparison (Net change): +0.14
8	2020/10/1	TSE Stock Daily OHLC, TSE CB Daily OHLC, TSE Stock Tick Prices, TSE CB Tick Prices	Due to the trading halt on the TSE market, information for October 1, 2020 are not recorded in these products.
9	2020/10/1	Index O/H/L/C Price, Index Tick	Due to the trading halt on the TSE market, information for October 1, 2020 are not recorded in these products. For index values for October 1, 2020, please refer to the "Appendix 5-4 index list (20201001)".
10	2022/9/1- 2032/7/31	O/H/L/C Price Data (Derivatives) (2)Options	The items of "Trade Volume without sco category" and "Trade Value without sco category" are recorded. However, the figures of these items are same as those of No. 22 "Trading Volume" and No. 24 "Trading Value" because strategy trading hasn't been available in financial options since September 21, 2021.

Appendix 5-2 Issue list (20120202)\_Standard

Code	Name
1311	TOPIX Core 30 Exchange Traded Fund
1317	Listed Index Fund TOPIX Mid400 Japan Mid Cap Equity
1330	Nikko Exchange Traded Index Fund 225
1332	Nippon Suisan Kaisha,Ltd.
1377	SAKATA SEED CORPORATION
1515	Nittetsu Mining Co.,Ltd.
1563	TSE Mothers Core ETF
1625	NEXT FUNDS TOPIX-17 ELECTRIC & PRECISION INSTRUMENTS ETF
1640	Daiwa ETF·TOPIX-17 STEEL & NONFERROUS METALS
1642	Daiwa ETF·TOPIX-17 ELECTRIC APPLIANCES PRECISION INSTRUMENTS
1643	Daiwa ETF·TOPIX-17 IT & SERVICES,OTHERS
1673	ETFs Physical Silver
1678	NEXT FUNDS S&P CNX Nifty Linked Exchange Traded Fund
1681	Listed Index Fund International Emerging Countries Equity
1692	ETFs Aluminium
1726	Br.Holdings Corporation
1816	ANDO Corporation
1820	Nishimatsu Construction Co.,Ltd.
1898	SEKITOKYU KOGYO CO.,LTD.
1969	Takasago Thermal Engineering Co.,Ltd.
1973	NEC Networks & System Integration Corporation
2001	Nippon Flour Mills Co.,Ltd.
2052	KYODO SHIRYO CO.,LTD.
2174	GCA Savvian Group Corporation
2181	Temp Holdings Co.,Ltd.
2206	EZAKI GLICO CO.,LTD.
2208	BOURBON CORPORATION
2209	IMURAYA GROUP CO.,LTD.
2217	Morozoff Limited
2395	SHIN NIPPON BIOMEDICAL LABORATORIES,LTD.
2402	amana holdings inc.
2462	J-COM Holdings Co.,Ltd.
2573	HOKKAIDO COCA-COLA BOTTLING CO.,LTD.
2664	CAWACHI LIMITED
2665	MITSUI KNOWLEDGE INDUSTRY CO.,LTD.
2689	KAWANISHI HOLDINGS,INC.
2730	EDION Corporation
2772	Genky Stores,Inc.
2791	DAIKOKUTENBUSSAN CO.,LTD.
2830	AOHATA Corporation
2894	Ishii Food Co.,Ltd.
3011	BANNERS CO.,LTD.
3063	j-Project Corp.
3071	Stream Co.,Ltd.
3116	TOYOTA BOSHOKU CORPORATION
3167	TOKAI Holdings Corporation
3168	Kurotani Corporation
3204	Toabo Corporation
3245	DEAR LIFE CO.,LTD.
3355	KURIYAMA CORPORATION
3360	SHIP HEALTHCARE HOLDINGS,INC.
3372	KANMONKAI Co.,Ltd.
3395	Saint Marc Holdings CO.,Ltd.
3398	KUSURI NO AOKI CO.,LTD.
3405	KURARAY CO.,LTD.
3421	INABA SEISAKUSHO Co.,Ltd.
3501	Suminoe Textile Co.,Ltd.
3529	ATSUGI CO.,LTD.



3553 KYOWA LEATHER CLOTH CO.,LTD.  
3591 WACOAL HOLDINGS CORP.  
3659 NEXON Co.,Ltd.  
3722 VeriSign Japan K.K.  
3726 Favorina Co.,Ltd.  
3747 INTERTRADE Co.,Ltd.  
3772 Dreamvisor Holdings,Inc.  
3774 Internet Initiative Japan Inc.  
3828 NIFTY Corporation  
3843 FreeBit Co.,Ltd.  
3945 Superbag Company,Limited  
4027 TAYCA CORPORATION  
4033 NITTO FC CO.,LTD.  
4041 Nippon Soda Co.,Ltd.  
4043 Tokuyama Corporation  
4045 TOAGOSEI CO.,LTD.  
4107 ISE CHEMICALS CORPORATION  
4229 Gun Ei Chemical Industry Co.,Ltd.  
4291 JIEC Co.,Ltd.  
4308 J-Stream Inc.  
4319 TAC CO.,LTD.  
4321 Kenedix, Inc.  
4323 Japan System Techniques Co.,Ltd.  
4337 PIA CORPORATION  
4346 Nexyz.Corporation  
4524 MORISHITA JINTAN CO.,LTD.  
4538 Fuso Pharmaceutical Industries,Ltd.  
4541 Nichi-Iko Pharmaceutical Co.,Ltd.  
4548 SEIKAGAKU CORPORATION  
4551 TORII PHARMACEUTICAL CO.,LTD.  
4552 JCR Pharmaceuticals Co.,Ltd.  
4555 SAWAI PHARMACEUTICAL CO.,LTD.  
4563 AnGes MG,Inc.  
4565 Sosei Group Corporation  
4583 Chiome Bioscience Inc.  
4613 KANSAI PAINT CO.,LTD.  
4633 SAKATA INX CORPORATION  
4674 CRESCO, LTD.  
4719 ALPHA SYSTEMS INC.  
4732 USS Co.,Ltd.  
4744 MET'S CORPORATION  
4745 Tokyo Individualized Educational Institute,INC.  
4751 CyberAgent,Inc.  
4766 PA Co.,Ltd.  
4902 KONICA MINOLTA HOLDINGS,INC.  
4956 KONISHI CO.,LTD.  
4968 ARAKAWA CHEMICAL INDUSTRIES,LTD.  
4974 TAKARA BIO INC.  
4994 Taisei Lamick Co.,Ltd.  
5105 Toyo Tire & Rubber Co.,Ltd.  
5196 KINUGAWA RUBBER INDUSTRIAL CO.,LTD.  
5262 Nippon Hume Corporation  
5395 Riken Corundum Company Limited  
5444 YAMATO KOGYO CO.,LTD.  
5563 Nippon Denko Co.,Ltd.  
5609 NIPPON CHUZO K.K.  
5738 Sumitomo Light Metal Industries,Ltd.  
5807 TOTOKU ELECTRIC CO.,LTD.  
5901 TOYO SEIKAN KAISHA,LTD.  
6022 Akasaka Diesels Ltd.  
6161 ESTIC CORPORATION  
6252 TAIYO,LTD.

6282 OILES CORPORATION  
6301 KOMATSU LTD.  
6319 SNT CORPORATION  
6332 TSUKISHIMA KIKAI CO.,LTD.  
6343 FREESIA MACROSS CORPORATION  
6358 SAKAI HEAVY INDUSTRIES,LTD.  
6371 TSUBAKIMOTO CHAIN CO.  
6376 NIKKISO CO.,LTD.  
6471 NSK Ltd.  
6474 NACHI-FUJIKOSHI CORP.  
6495 MIYAIRI VALVE MFG.CO.,LTD.  
6501 Hitachi,Ltd.  
6503 Mitsubishi Electric Corporation  
6581 Hitachi Koki Co.,Ltd.  
6622 DAIHEN CORPORATION  
6639 CONTEC CO.,LTD.  
6654 FUJI ELECTRIC INDUSTRY CO.,LTD.  
6656 inspec Inc.  
6719 FUJITSU COMPONENT LIMITED  
6737 EIZO NANA O CORPORATION  
6747 KI HOLDINGS CO.,LTD.  
6755 FUJITSU GENERAL LIMITED  
6756 Hitachi Kokusai Electric Inc.  
6758 SONY CORPORATION  
6763 Teikoku Tsushin Kogyo Co.,Ltd.  
6786 RealVision Inc.  
6788 NIHON TRIM CO.,LTD.  
6793 SANSUI ELECTRIC CO.,LTD.  
6807 Japan Aviation Electronics Industry,Limited  
6820 ICOM INCORPORATED  
6826 HONDA TSUSHIN KOGYO CO.,LTD.  
6859 ESPEC CORP.  
6860 Panasonic Electric Works SUNX Co.,Ltd.  
6866 HIOKI E.E.CORPORATION  
6881 KYODEN COMPANY,LIMITED  
6900 TOKYO DENPA CO.,LTD.  
6973 KYOEI SANGYO CO.,LTD.  
7021 NITCHITSU CO.,LTD.  
7202 ISUZU MOTORS LIMITED  
7212 F-TECH INC.  
7224 ShinMaywa Industries,LTD.  
7254 UNIVANCE CORPORATION  
7294 YOROZU CORPORATION  
7427 ECHO TRADING CO.,LTD.  
7447 NAGAILEBEN Co.,Ltd.  
7459 MEDIPAL HOLDINGS CORPORATION  
7487 OZU CORPORATION  
7550 ZENSHO HOLDINGS CO.,LTD.  
7602 Carchs Holdings Co.,Ltd.  
7607 Shinwa Co.,Ltd.  
7608 SK JAPAN CO.,LTD.  
7649 SUGI HOLDINGS Co.,LTD.  
7701 Shimadzu Corporation  
7723 Aichi Tokei Denki Co.,Ltd.  
7745 A&D Company,Limited  
7821 MAEDA KOSEN CO.,LTD.  
7879 NODA CORPORATION  
7896 SEVEN INDUSTRIES CO.,LTD.  
7915 NISSHA PRINTING CO.,LTD.  
7936 ASICS Corporation  
7951 YAMAHA CORPORATION  
7955 Cleanup Corporation

7972 ITOKI CORPORATION  
 7976 MITSUBISHI PENCIL COMPANY,LIMITED  
 7987 NAKABAYASHI CO.,LTD.  
 8012 NAGASE & CO.,LTD.  
 8020 KANEMATSU CORPORATION  
 8075 Shinsho Corporation  
 8079 SHOEI FOODS CORPORATION  
 8081 KANADEN CORPORATION  
 8098 Inabata & Co.,Ltd.  
 8154 KAGA ELECTRONICS CO.,LTD.  
 8179 ROYAL HOLDINGS Co., Ltd.  
 8217 OKUWA CO.,LTD.  
 8227 SHIMAMURA Co.,Ltd.  
 8267 AEON CO.,LTD.  
 8270 UNY CO.,LTD.  
 8283 Paltac Corporation  
 8289 Olympic Corporation  
 8324 The Daishi Bank,Ltd.  
 8361 The Ogaki Kyoritsu Bank,Ltd.  
 8369 The Bank of Kyoto,Ltd.  
 8374 The Mie Bank,Ltd.  
 8388 The Awa Bank,Ltd.  
 8395 THE BANK OF SAGA LTD.  
 8426 NISSIN SERVICER CO.,LTD.  
 8530 The Chukyo Bank,Limited  
 8600 TOMONY Holdings,Inc.  
 8742 KOBAYASHI YOKO CO., LTD.  
 8750 The Dai-ichi Life Insurance Company,Limited  
 8802 Mitsubishi Estate Company,Limited  
 8806 DAIBIRU CORPORATION  
 8871 GOLDCREST Co.,Ltd.  
 8875 TOUEI HOUSING CORPORATION  
 8881 NISSHIN FUDOSAN Co.,Ltd.  
 8925 ARDEPRO Co.,Ltd.  
 8933 NTT URBAN DEVELOPMENT CORPORATION  
 8940 INTELLEX Co.,Ltd.  
 8972 Kenedix Realty Investment Corporation  
 8973 Sekisui House SI Investment Corporation  
 9005 TOKYU CORPORATION  
 9039 Sakai Moving Service Co.,Ltd.  
 9070 TONAMI HOLDINGS CO.,LTD.  
 9086 Hitachi Transport System,Ltd.  
 9375 Kintetsu World Express,inc.  
 9435 HIKARI TSUSHIN,INC.  
 9475 Shobunsha Publications,Inc.  
 9501 The Tokyo Electric Power Company,Incorporated  
 9503 The Kansai Electric Power Company,Incorporated  
 9531 TOKYO GAS CO.,LTD.  
 9624 CHODAI CO.,LTD.  
 9630 UP INC.  
 9761 TOKAI LEASE CO.,LTD.  
 9765 OHBA CO.,LTD.  
 9902 NICHIDEN Corporation  
 900012181 Temp Holdings Co.,Ltd. 1  
 900028369 The Bank of Kyoto,Ltd. 2  
 900068267 AEON CO.,LTD. 6  
 900078267 AEON CO.,LTD. 7  
 900086501 Hitachi,Ltd. 8

(241 issues)

## Appendix 5-3 Issue list (20120202)\_Full

Code	Name
1311	TOPIX Core 30 Exchange Traded Fund
1317	Listed Index Fund TOPIX Mid400 Japan Mid Cap Equity
1322	Listed Index Fund China A Share (Panda) CSI300
1334	Maruha Nichiro Holdings,Inc.
1414	SHO-BOND Holdings Co.,Ltd.
1515	Nittetsu Mining Co.,Ltd.
1542	Japan Physical Silver ETF
1543	Japan Physical Palladium ETF
1562	YOURMIRAI TOPIX Asia Focus ETF
1615	TOPIX Banks Exchange Traded Fund
1625	NEXT FUNDS TOPIX-17 ELECTRIC & PRECISION INSTRUMENTS ETF
1627	NEXT FUNDS TOPIX-17 ELECTRIC POWER & GAS ETF
1640	Daiwa ETF·TOPIX-17 STEEL & NONFERROUS METALS
1643	Daiwa ETF·TOPIX-17 IT & SERVICES,OTHERS
1644	Daiwa ETF·TOPIX-17 ELECTRIC POWER & GAS
1678	NEXT FUNDS S&P CNX Nifty Linked Exchange Traded Fund
1680	Listed Index Fund International Developed Countries Equity
1692	ETFS Aluminium
1722	MISAWA HOMES CO.,LTD.
1802	OBAYASHI CORPORATION
1812	KAJIMA CORPORATION
1819	Taihei Kogyo Co.,Ltd.
1820	Nishimatsu Construction Co.,Ltd.
1821	Sumitomo Mitsui Construction Co.,Ltd.
1834	Daiwa Odakyu Construction Co.,Ltd.
1844	OHMORI CO.,LTD.
1867	UEKI CORPORATION
1896	OBAYASHI ROAD CORPORATION
1898	SEIKITOKYU KOGYO CO.,LTD.
1935	TTK Co.,Ltd.
1939	YONDENKO CORPORATION
1946	TOENEC CORPORATION
1960	Sanyo Engineering & Construction Inc.
1964	Chugai Ro Co.,Ltd.
1965	TECHNO RYOWA LTD.
1969	Takasago Thermal Engineering Co.,Ltd.
1973	NEC Networks & System Integration Corporation
1978	Daiki Ataka Engineering Co.,Ltd.
2001	Nippon Flour Mills Co.,Ltd.
2028	iPath S&P GSCI Livestock Index Total Return JDR
2170	Link and Motivation Inc.
2181	Temp Holdings Co.,Ltd.
2206	EZAKI GLICO CO.,LTD.
2212	YAMAZAKI BAKING CO.,LTD.
2216	KANRO CO.,LTD.
2264	MORINAGA MILK INDUSTRY CO.,LTD.
2270	MEGMILK SNOW BRAND Co.,Ltd.
2301	GAKUJO CO.,Ltd.
2342	TRANS GENIC INC.
2352	AZIA CO.,LTD.
2353	NIPPON PARKING DEVELOPMENT Co.,Ltd.
2369	MediBIC Group
2378	RENAISSANCE,INCORPORATED
2395	SHIN NIPPON BIOMEDICAL LABORATORIES,LTD.
2462	J-COM Holdings Co.,Ltd.
2477	Hikaku.com Corporation
2478	MK Capital Management Corporation
2540	YOMEISHU SEIZO CO.,LTD.
2573	HOKKAIDO COCA-COLA BOTTLING CO.,LTD.
2579	COCA-COLA WEST COMPANY,LIMITED
2590	DyDo DRINCO,INC.
2594	KEY COFFEE INC
2660	KIRINDO CO.,LTD.
2664	CAWACHI LIMITED

2675 DYNAC CORPORATION  
 2689 KAWANISHI HOLDINGS,INC.  
 2695 KURA CORPORATION  
 2715 Elematec Corporation  
 2730 EDION Corporation  
 2772 Genky Stores,Inc.  
 2791 DAIKOKUTENBUSSAN CO.,LTD.  
 2830 AOHATA Corporation  
 2892 NIHON SHOKUJIN KAKO CO.,LTD.  
 2894 Ishii Food Co.,Ltd.  
 2899 NAGATANIEN CO.,LTD.  
 3004 SHINYEI KAISHA  
 3063 j-Project Corp.  
 3098 cocokara fine Inc.  
 3105 Nisshinbo Holdings Inc.  
 3110 NITTO BOSEKI CO.,LTD.  
 3116 TOYOTA BOSHOKU CORPORATION  
 3167 TOKAI Holdings Corporation  
 3168 Kurotani Corporation  
 3204 Toabo Corporation  
 3205 DAIDOH LIMITED  
 3231 Nomura Real Estate Holdings,Inc.  
 3302 TEIKOKU SEN-I Co.,Ltd.  
 3321 MITACHI CO.,LTD.  
 3325 Kenko.com,Inc.  
 3333 ASAHI CO.,LTD.  
 3341 NIHON CHOUZAI Co.,Ltd.  
 3355 KURIYAMA CORPORATION  
 3360 SHIP HEALTHCARE HOLDINGS,INC.  
 3366 ICHIROKUDO CO.,LTD.  
 3372 KANMONKAI Co.,Ltd.  
 3393 STARTIA INC.  
 3395 Saint Marc Holdings CO.,Ltd.  
 3398 KUSURI NO AOKI CO.,LTD.  
 3421 INABA SEISAKUSHO Co.,Ltd.  
 3553 KYOWA LEATHER CLOTH CO.,LTD.  
 3591 WACOAL HOLDINGS CORP.  
 3607 KURAUDIA CO.,LTD.  
 3622 Netyear Group Corporation  
 3630 Densan System Co.,Ltd.  
 3646 Ekitan & Co.,Ltd.  
 3722 VeriSign Japan K.K.  
 3738 T-Gaia Corporation  
 3747 INTERTRADE Co.,Ltd.  
 3750 SEVEN SEAS HOLDINGS CO.,LTD.  
 3753 FLIGHT SYSTEM CONSULTING Inc.  
 3756 MAMEZOU OS HOLDINGS CO.,LTD.  
 3769 GMO Payment Gateway,Inc.  
 3773 Advanced Media,Inc.  
 3774 Internet Initiative Japan Inc.  
 3799 Keyware Solutions Inc.  
 3828 NIFTY Corporation  
 3850 NTT DATA INTRAMART CORPORATION  
 3853 Infoteria Corporation  
 3945 Superbag Company,Limited  
 3955 IMURA ENVELOPE CO.,INC.  
 4004 Showa Denko K.K.  
 4007 Nippon Kasei Chemical Company Limited  
 4028 ISHIHARA SANGYO KAISHA,LTD.  
 4033 NITTO FC CO.,LTD.  
 4043 Tokuyama Corporation  
 4044 Central Glass Co.,Ltd.  
 4045 TOAGOSEI CO.,LTD.  
 4064 Nippon Carbide Industries Company,Incorporated  
 4094 NIHON KAGAKU SANGYO CO.,LTD.  
 4099 SHIKOKU CHEMICALS CORPORATION  
 4107 ISE CHEMICALS CORPORATION  
 4109 STELLA CHEMIFA CORPORATION

4188 Mitsubishi Chemical Holdings Corporation  
 4212 Sekisui Jushi Corporation  
 4217 Hitachi Chemical Company,Ltd.  
 4229 Gun Ei Chemical Industry Co.,Ltd.  
 4282 EPS Corporation  
 4291 JIEC Co.,Ltd.  
 4321 Kenedix, Inc.  
 4323 Japan System Techniques Co.,Ltd.  
 4324 DENTSU INC.  
 4333 TOHO SYSTEM SCIENCE CO.,LTD.  
 4337 PIA CORPORATION  
 4346 Nexyz.Corporation  
 4461 Dai-ichi Kogyo Seiyaku Co.,Ltd.  
 4506 Dainippon Sumitomo Pharma Co.,Ltd.  
 4516 Nippon Shinyaku Co.,Ltd.  
 4523 Eisai Co.,Ltd.  
 4524 MORISHITA JINTAN CO.,LTD.  
 4527 ROHTO PHARMACEUTICAL CO.,LTD.  
 4530 HISAMITSU PHARMACEUTICAL CO.,INC.  
 4538 Fuso Pharmaceutical Industries,Ltd.  
 4539 NIPPON CHEMIPHAR CO.,LTD.  
 4541 Nichi-Iko Pharmaceutical Co.,Ltd.  
 4544 Miraca Holdings Inc.  
 4548 SEIKAGAKU CORPORATION  
 4550 Nissui Pharmaceutical Co.,Ltd.  
 4551 TORII PHARMACEUTICAL CO.,LTD.  
 4554 Fuji Pharma Co.,Ltd.  
 4555 SAWAI PHARMACEUTICAL CO.,LTD.  
 4565 Sosei Group Corporation  
 4575 CanBas Co.,Ltd.  
 4578 Otsuka Holdings Co.,Ltd.  
 4583 Chiome Bioscience Inc.  
 4613 KANSAI PAINT CO.,LTD.  
 4633 SAKATA INX CORPORATION  
 4679 TAYA Co.,Ltd.  
 4724 WAREHOUSE Co.,Ltd.  
 4732 USS Co.,Ltd.  
 4743 ITFOR Inc.  
 4744 MET'S CORPORATION  
 4767 TOW CO.,LTD.  
 4824 MEDIASEEK,inc.  
 4902 KONICA MINOLTA HOLDINGS,INC.  
 4914 TAKASAGO INTERNATIONAL CORPORATION  
 4968 ARAKAWA CHEMICAL INDUSTRIES,LTD.  
 4974 TAKARA BIO INC.  
 4992 HOKKO CHEMICAL INDUSTRY CO.,LTD.  
 5105 Toyo Tire & Rubber Co.,Ltd.  
 5196 KINUGAWA RUBBER INDUSTRIAL CO.,LTD.  
 5276 ISHIKAWAJIMA CONSTRUCTION MATERIALS Co.,Ltd.  
 5393 NICHIAS CORPORATION  
 5395 Riken Corundum Company Limited  
 5408 NAKAYAMA STEEL WORKS,LTD.  
 5444 YAMATO KOGYO CO.,LTD.  
 5451 Yodogawa Steel Works,Ltd.  
 5463 Maruichi Steel Tube Ltd.  
 5563 Nippon Denko Co.,Ltd.  
 5609 NIPPON CHUZO K.K.  
 5612 NIPPON CHUTETSUKAN K.K.  
 5713 Sumitomo Metal Mining Co.,Ltd.  
 5729 NIHON SEIKO CO.,LTD.  
 5807 TOTOKU ELECTRIC CO.,LTD.  
 5901 TOYO SEIKAN KAISHA,LTD.  
 5917 SAKURADA CO.,LTD.  
 5921 Kawagishi Bridge Works Co.,Ltd.  
 5956 TOSO CO., LTD.  
 5974 CHUGOKUKOGYO CO.,LTD.  
 6022 Akasaka Diesels Ltd.  
 6112 Kojima Iron Works Co.,Ltd.

6137 KOIKE SANSO KOGYO CO.,LTD.  
 6140 Asahi Diamond Industrial Co.,Ltd.  
 6151 NITTO KOHKI CO.,LTD.  
 6161 ESTIC CORPORATION  
 6217 TSUDAKOMA Corp.  
 6247 HISAKA WORKS,LTD.  
 6252 TAIYO,LTD.  
 6273 SMC CORPORATION  
 6287 SATO HOLDINGS CORPORATION  
 6298 Y.A.C. CO.,LTD.  
 6319 SNT CORPORATION  
 6321 IHI Transport Machinery Co.,Ltd.  
 6332 TSUKISHIMA KIKAI CO.,LTD.  
 6343 FREESIA MACROSS CORPORATION  
 6345 AICHI CORPORATION  
 6356 NIPPON GEAR CO.,LTD.  
 6358 SAKAI HEAVY INDUSTRIES,LTD.  
 6366 Chiyoda Corporation  
 6376 NIKKISO CO.,LTD.  
 6395 TADANO LTD.  
 6420 FUKUSHIMA INDUSTRIES CORP.  
 6443 TOYO ENGINEERING WORKS,LTD.  
 6455 MORITA HOLDINGS CORPORATION  
 6471 NSK Ltd.  
 6474 NACHI-FUJIKOSHI CORP.  
 6495 MIYAIRI VALVE MFG.CO.,LTD.  
 6501 Hitachi,Ltd.  
 6505 TOYO DENKI SEIZO K.K.(TOYO ELECTRIC MFG.CO.,LTD.)  
 6581 Hitachi Koki Co.,Ltd.  
 6586 Makita Corporation  
 6622 DAIHEN CORPORATION  
 6627 Tera Probe,Inc.  
 6639 CONTEC CO.,LTD.  
 6645 OMRON Corporation  
 6654 FUJI ELECTRIC INDUSTRY CO.,LTD.  
 6656 inspec Inc.  
 6704 IWATSU ELECTRIC CO.,LTD.  
 6715 NAKAYO TELECOMMUNICATIONS,INC.  
 6719 FUJITSU COMPONENT LIMITED  
 6747 KI HOLDINGS CO.,LTD.  
 6756 Hitachi Kokusai Electric Inc.  
 6763 Teikoku Tsushin Kogyo Co.,Ltd.  
 6768 TAMURA CORPORATION  
 6772 Tokyo Cosmos Electric Co.,Ltd.  
 6786 RealVision Inc.  
 6788 NIHON TRIM CO.,LTD.  
 6801 TOKO,INC.  
 6820 ICOM INCORPORATED  
 6849 NIHON KOHDEN CORPORATION  
 6859 ESPEC CORP.  
 6866 HIOKI E.E.CORPORATION  
 6881 KYODEN COMPANY,LIMITED  
 6902 DENSO CORPORATION  
 6965 HAMAMATSU PHOTONICS K.K.  
 6986 FUTABA CORPORATION  
 6988 NITTO DENKO CORPORATION  
 7021 NITCHITSU CO.,LTD.  
 7212 F-TECH INC.  
 7224 ShinMaywa Industries,LTD.  
 7235 TOKYO RADIATOR MFG.CO.,LTD.  
 7254 UNIVANCE CORPORATION  
 7256 KASAI KOGYO CO.,LTD.  
 7259 AISIN SEIKI CO.,LTD.  
 7260 Fuji Kiko Co.,Ltd.  
 7266 Imasen Electric Industrial Co.,Ltd.  
 7276 KOITO MANUFACTURING CO.,LTD.  
 7299 FUJI OOZX Inc.  
 7420 SATORI ELECTRIC CO.,LTD.

7447 NAGAILEBEN Co.,Ltd.  
7459 MEDIPAL HOLDINGS CORPORATION  
7474 G.networks CO.,LTD.  
7476 AS ONE CORPORATION  
7487 OZU CORPORATION  
7494 KONAKA CO.,LTD.  
7550 ZENSHO HOLDINGS CO.,LTD.  
7591 EXCEL CO.,LTD.  
7602 Carchs Holdings Co.,Ltd.  
7607 Shinwa Co.,Ltd.  
7608 SK JAPAN CO.,LTD.  
7630 ICHIBANYA CO.,LTD.  
7631 MACNICA,Inc.  
7640 TOP CULTURE Co.,Ltd.  
7649 SUGI HOLDINGS Co.,LTD.  
7701 Shimadzu Corporation  
7718 STAR MICRONICS CO.,LTD.  
7723 Aichi Tokei Denki Co.,Ltd.  
7729 TOKYO SEIMITSU CO.,LTD.  
7732 TOPCON CORPORATION  
7735 Dainippon Screen Mfg.Co.,Ltd.  
7756 NIDEC COPAL CORPORATION  
7817 PARAMOUNT BED HOLDINGS CO.,LTD.  
7819 SHO-BI Corporation  
7821 MAEDA KOSEN CO.,LTD.  
7833 IFIS JAPAN LTD.  
7846 PILOT CORPORATION  
7862 TOPPAN FORMS CO.,LTD.  
7874 LEC,INC.  
7896 SEVEN INDUSTRIES CO.,LTD.  
7914 Kyodo Printing Co.,Ltd.  
7915 NISSHA PRINTING CO.,LTD.  
7916 MITSUMURA PRINTING CO.,LTD.  
7936 ASICS Corporation  
7944 Roland Corporation  
7951 YAMAHA CORPORATION  
7955 Cleanup Corporation  
7968 TASAKI & Co.,Ltd.  
7972 ITOKI CORPORATION  
7976 MITSUBISHI PENCIL COMPANY,LIMITED  
7990 GLOBERIDE,Inc.  
8006 YUASA FUNASHOKU Co.,Ltd.  
8012 NAGASE & CO.,LTD.  
8018 SANKYO SEIKO CO.,LTD.  
8020 KANEMATSU CORPORATION  
8025 TSUKAMOTO CORPORATION CO.,LTD.  
8038 TOHTO SUISAN CO.,LTD.  
8053 SUMITOMO CORPORATION (SUMITOMO SHOJI KAISHA,LTD.)  
8065 SATO SHOJI CORPORATION  
8079 SHOEI FOODS CORPORATION  
8081 KANADEN CORPORATION  
8088 IWATANI CORPORATION  
8095 IWAKI & CO.,LTD.  
8098 Inabata & Co.,Ltd.  
8105 MARUSHO HOTTA CO.,LTD.  
8142 TOHO Co.,Ltd.  
8179 ROYAL HOLDINGS Co., Ltd.  
8227 SHIMAMURA Co.,Ltd.  
8229 CFS Corporation  
8278 FUJI CO., LTD.  
8283 Paltac Corporation  
8289 Olympic Corporation  
8308 Resona Holdings,Inc.  
8324 The Daishi Bank,Ltd.  
8327 THE NISHI-NIPPON CITY BANK,LTD.  
8344 The Yamagata Bank,Ltd.  
8355 THE SHIZUOKA BANK,LTD.  
8361 The Ogaki Kyoritsu Bank,Ltd.



8374 The Mie Bank,Ltd.  
 8388 The Awa Bank,Ltd.  
 8425 IBJ Leasing Company,Limited  
 8511 Japan Securities Finance Co.,Ltd.  
 8536 The Higashi-Nippon Bank,Limited  
 8543 THE MINATO BANK,LTD.  
 8572 ACOM CO.,LTD.  
 8600 TOMONY Holdings,Inc.  
 8609 OKASAN SECURITIES GROUP INC.  
 8624 Ichiyoshi Securities Co.,Ltd.  
 8742 KOBAYASHI YOKO CO., LTD.  
 8750 The Dai-ichi Life Insurance Company,Limited  
 8801 Mitsui Fudosan Co.,Ltd.  
 8802 Mitsubishi Estate Company,Limited  
 8806 DAIBIRU CORPORATION  
 8830 Sumitomo Realty & Development Co.,Ltd.  
 8871 GOLDCREST Co.,Ltd.  
 8875 TOUEI HOUSING CORPORATION  
 8880 Iida Home Max Co.,Ltd.  
 8923 TOSEI CORPORATION  
 8925 ARDEPRO Co.,Ltd.  
 8933 NTT URBAN DEVELOPMENT CORPORATION  
 8940 INTELLEX Co.,Ltd.  
 8944 LAND BUSINESS CO.,LTD.  
 8968 Fukuoka REIT Corporation  
 8973 Sekisui House SI Investment Corporation  
 8982 Top REIT,Inc.  
 8984 Daiwa House Residential Investment Corporation  
 8992 Goodman Japan Limited  
 9005 TOKYU CORPORATION  
 9014 Shin-Keisei Electric Railway Co.,Ltd.  
 9028 ZERO CO.,LTD.  
 9039 Sakai Moving Service Co.,Ltd.  
 9068 Maruzen Showa Unyu Co.,Ltd.  
 9070 TONAMI HOLDINGS CO.,LTD.  
 9072 NIPPON KONPO UNYU SOKO CO.,LTD.  
 9086 Hitachi Transport System,Ltd.  
 9130 KYOEI TANKER CO.,LTD.  
 9132 DAIICHI CHUO KISEN KAISHA  
 9206 Star Flyer Inc.  
 9232 PASCO CORPORATION  
 9324 The Yasuda Warehouse Company,Limited  
 9360 SUZUYO SHINWART CORPORATION  
 9370 Yusen Logistics Co.,Ltd.  
 9373 Nikko Travel Co.,Ltd.  
 9375 Kintetsu World Express,inc.  
 9474 ZENRIN CO.,LTD.  
 9501 The Tokyo Electric Power Company,Incorporated  
 9503 The Kansai Electric Power Company,Incorporated  
 9506 Tohoku Electric Power Company,Incorporated  
 9507 Shikoku Electric Power Company,Incorporated  
 9511 The Okinawa Electric Power Company, Incorporated  
 9514 The First Energy Service Company,Limited  
 9542 SHINNIHON GAS CORPORATION  
 9624 CHODAI CO.,LTD.  
 9630 UP INC.  
 9633 TOKYO THEATRES COMPANY,INCORPORATED  
 9681 TOKYO DOME CORPORATION  
 9682 DTS CORPORATION  
 9715 transcocosmos inc.  
 9722 FUJITA KANKO INC.  
 9729 TOKAI Corp.  
 9735 SECOM CO.,LTD.  
 9742 INES Corporation  
 9757 Funai Consulting Incorporated  
 9761 TOKAI LEASE CO.,LTD.  
 9763 Marubeni Construction Material Lease Co.,Ltd.  
 9787 AEON DELIGHT CO.,LTD.

9793 Daiseki Co.,Ltd.  
9797 NIPPON ENGINEERING CONSULTANTS CO.,LTD.  
9799 ASAHİ INTELLIGENCE SERVICE CO.,LTD.  
9883 FUJI ELECTRONICS CO.,LTD.  
9902 NICHİDEN Corporation  
9922 Hitachi Metals Techno,Ltd.  
9930 KITAZAWA SANGYO CO.,LTD.  
9961 M.O.TEC CORPORATION  
9986 ZAOH COMPANY,LTD.  
900012181 Temp Holdings Co.,Ltd. 1  
900027266 Imasen Electric Industrial Co.,Ltd. 2  
900086501 Hitachi,Ltd. 8

(417 issues)

## Appendix 5-4 index list (20201001)

## (1) List of O/H/L/C

Index name	Index code	Index Value on October 1, 2020 (OHLC of each index are the same as following value.)
JPX-Nikkei Index 400	8507	14617.28
JPX-Nikkei Mid and Small Cap Index	8508	14132.7
TOPIX	0000	1625.49
TOPIX Core30	0028	744.06
TOPIX Large70	0029	1630.96
TOPIX 100	002A	1031.5
TOPIX Mid400	002B	1852.48
TOPIX 500	002C	1253.53
TOPIX Small	002D	2094.79
TOPIX 1000	002E	1529.62
TOPIX Small500	002F	903.25
1st Section Large	0002	1487.02
1st Section Mid	0003	1949.28
1st Section Small	0004	3092.55
Fishery, Agriculture & Forestry	0040	469.18
Mining	0041	168.88
Construction	0042	1007.28
Foods	0043	1614.69
Textiles & Apparels	0044	508.3
Pulp & Paper	0045	442.35
Chemicals	0046	1986.29
Pharmaceutical	0047	3319.9
Oil & Coal Products	0048	824
Rubber Products	0049	2422.44
Glass & Ceramics Products	004A	953.27
Iron & Steel	004B	269.45
Nonferrous Metals	004C	758.28
Metal Products	004D	1039.2
Machinery	004E	1877.77
Electronic Appliances	004F	2681.3
Transportation Equipment	0050	2397.68
Precision Instruments	0051	8761.29
Other Products	0052	3474.67
Electric Power & Gas	0053	363.27
Land Transportation	0054	1859.25
Marine Transportation	0055	224.79
Air Transportation	0056	180.1
Warehousing & Harbor Transportation Service	0057	1631.38
Information & Communication	0058	4328.09
Wholesale Trade	0059	1460.5
Retail Trade	005A	1293.09
Banks	005B	115.69
Securities & Commodity Futures	005C	315.66
Insurance	005D	821.26
Other Financing Business	005E	589.78
Real Estate	005F	1190
Services	0060	2403.61

TOPIX-17 FOODS	0080	277.81
TOPIX-17 ENERGY RESOURCES	0081	84.19
TOPIX-17 CONSTRUCTION & MATERIALS	0082	211.37
TOPIX-17 RAW MATERIALS & CHEMICALS	0083	251.42
TOPIX-17 PHARMACEUTICAL	0084	256.65
TOPIX-17 AUTOMOBILES & TRANSPORTATION EQUIPMENT	0085	177.97
TOPIX-17 STEEL & NONFERROUS METALS	0086	130.76
TOPIX-17 MACHINERY	0087	370.06
TOPIX-17 ELECTRIC APPLIANCES & PRECISION INSTRUMENTS	0088	220.61
TOPIX-17 IT & SERVICES, OTHERS	0089	266.44
TOPIX-17 ELECTRIC POWER & GAS	008A	60.16
TOPIX-17 TRANSPORTATION & LOGISTICS	008B	146.75
TOPIX-17 COMMERCIAL & WHOLESALE TRADE	008C	354.87
TOPIX-17 RETAIL TRADE	008D	224.63
TOPIX-17 BANKS	008E	74.4
TOPIX-17 FINANCIALS (EX BANKS)	008F	111.5
TOPIX-17 REAL ESTATE	0090	248.91
TOPIX Value	8100	1551.17
TOPIX Growth	8200	2434.84
TOPIX 500 Value	812C	1481.17
TOPIX 500 Growth	822C	2427.49
TOPIX Small Value	812D	2407.19
TOPIX Small Growth	822D	2524.61
Dividend Focus 100	8500	1399.32
TOPIX Ex-Financials	8506	1461.66
TOPIX Leveraged (2x) Index	1000	35924.88
TOPIX Inverse (-1x) Index	1001	3233.97
TOPIX Double Inverse (-2x) Index	1002	754.7
Second Section Stock Price Index	0001	6216.86
Tokyo Stock Exchange Mothers Index	0070	1226.58
Tokyo Stock Exchange Mothers Core Index	8505	3329.44
JASDAQ INDEX	0091	172.09
JASDAQ INDEX (Standard)	0092	376.91
JASDAQ INDEX (Growth)	0093	159.2
J-Stock Index	0094	3624.65
JASDAQ-TOP20	1A00	4730.37
REIT	0075	1726.66
Tokyo Stock Exchange REIT Office Index	8501	1599.81
Tokyo Stock Exchange REIT Residential Index	8502	2871.79
Tokyo Stock Exchange REIT Retail & Logistics, Others Index	8503	2189.06
Tokyo Stock Exchange Infrastructure Funds Index	0099	1096.88
TOPIX Composite	0076	2055.06
Tokyo Stock Exchange Second Section Composite Index	0078	3318.93
Tokyo Stock Exchange Mothers Composite Index	0079	3641.21

## (2) List of tick data

Index name	Index code	Index value on October 1, 2020 (Tick data of each index is the same as following value all day.)
JPX-Nikkei Index 400	8507	14,617.28
JPX-Nikkei Mid and Small Cap Index	8508	14,132.70
TOPIX	0000	1,625.49
TOPIX Core30	0028	744.06
TOPIX Large70	0029	1,630.96
TOPIX 100	002A	1,031.50
TOPIX Mid400	002B	1,852.48
TOPIX 500	002C	1,253.53
TOPIX Small	002D	2,094.79
TOPIX 1000	002E	1,529.62
TOPIX Small500	002F	903.25
1st Section Large	0002	1,487.02
1st Section Mid	0003	1,949.28
1st Section Small	0004	3,092.55
Fishery, Agriculture & Forestry	0040	469.18
Mining	0041	168.88
Construction	0042	1,007.28
Foods	0043	1,614.69
Textiles & Apparels	0044	508.30
Pulp & Paper	0045	442.35
Chemicals	0046	1,986.29
Pharmaceutical	0047	3,319.90
Oil & Coal Products	0048	824.00
Rubber Products	0049	2,422.44
Glass & Ceramics Products	004A	953.27
Iron & Steel	004B	269.45
Nonferrous Metals	004C	758.28
Metal Products	004D	1,039.20
Machinery	004E	1,877.77
Electronic Appliances	004F	2,681.30
Transportation Equipment	0050	2,397.68
Precision Instruments	0051	8,761.29
Other Products	0052	3,474.67
Electric Power & Gas	0053	363.27
Land Transportation	0054	1,859.25
Marine Transportation	0055	224.79
Air Transportation	0056	180.10
Warehousing & Harbor Transportation Service	0057	1,631.38
Information & Communication	0058	4,328.09
Wholesale Trade	0059	1,460.50
Retail Trade	005A	1,293.09
Banks	005B	115.69
Securities & Commodity Futures	005C	315.66
Insurance	005D	821.26
Other Financing Business	005E	589.78
Real Estate	005F	1,190.00
Services	0060	2,403.61
TOPIX-17 FOODS	0080	277.81
TOPIX-17 ENERGY RESOURCES	0081	84.19
TOPIX-17 CONSTRUCTION & MATERIALS	0082	211.37
TOPIX-17 RAW MATERIALS & CHEMICALS	0083	251.42
TOPIX-17 PHARMACEUTICAL	0084	256.65
TOPIX-17 AUTOMOBILES & TRANSPORTATION EQUIPMENT	0085	177.97
TOPIX-17 STEEL & NONFERROUS METALS	0086	130.76
TOPIX-17 MACHINERY	0087	370.06

TOPIX-17 ELECTRIC APPLIANCES & PRECISION INSTRUMENTS	0088	220.61
TOPIX-17 IT & SERVICES, OTHERS	0089	266.44
TOPIX-17 ELECTRIC POWER & GAS	008A	60.16
TOPIX-17 TRANSPORTATION & LOGISTICS	008B	146.75
TOPIX-17 COMMERCIAL & WHOLESALE TRADE	008C	354.87
TOPIX-17 RETAIL TRADE	008D	224.63
TOPIX-17 BANKS	008E	74.40
TOPIX-17 FINANCIALS (EX BANKS)	008F	111.50
TOPIX-17 REAL ESTATE	0090	248.91
TOPIX Value	8100	1,551.17
TOPIX Growth	8200	2,434.84
TOPIX 500 Value	812C	1,481.17
TOPIX 500 Growth	822C	2,427.49
TOPIX Small Value	812D	2,407.19
TOPIX Small Growth	822D	2,524.61
Dividend Focus 100	8500	1,399.32
TOPIX Ex-Financials	8506	1,461.66
TOPIX Leveraged (2x) Index	1000	35,924.88
TOPIX Inverse (-1x) Index	1001	3,233.97
TOPIX Double Inverse (-2x) Index	1002	754.70
Second Section Stock Price Index	0001	6,216.86
Tokyo Stock Exchange Mothers Index	0070	1,226.58
Tokyo Stock Exchange Mothers Core Index	8505	3,329.44
JASDAQ INDEX	0091	172.09
JASDAQ INDEX (Standard)	0092	376.91
JASDAQ INDEX (Growth)	0093	159.20
J-Stock Index	0094	3,624.65
JASDAQ-TOP20	1A00	4,730.37
REIT	0075	1,726.66
Tokyo Stock Exchange REIT Office Index	8501	1,599.81
Tokyo Stock Exchange REIT Residential Index	8502	2,871.79
Tokyo Stock Exchange REIT Retail & Logistics, Others Index	8503	2,189.06
Tokyo Stock Exchange Infrastructure Funds Index	0099	1,096.88
TOPIX Composite	0076	2,055.06
Tokyo Stock Exchange Second Section Composite Index	0078	3,318.93
Tokyo Stock Exchange Mothers Composite Index	0079	3,641.21